

**Ukuthuthuka Kokuqala Kwezingane Ezincane  
Amakhadi Amakhulu  
Amakhono Empilo  
Izilwane**



Publisher: The Novus Foundation  
10 Freedom Way, Montague Gardens, Cape Town, 7441.  
[www.thenovusfoundation.org.za](http://www.thenovusfoundation.org.za)

© 2025 The Novus Foundation. All rights reserved.



**Intshe**

**Ulwazi olungabalulekile kangako:  
Intshe ayikwazi ukundiza.**



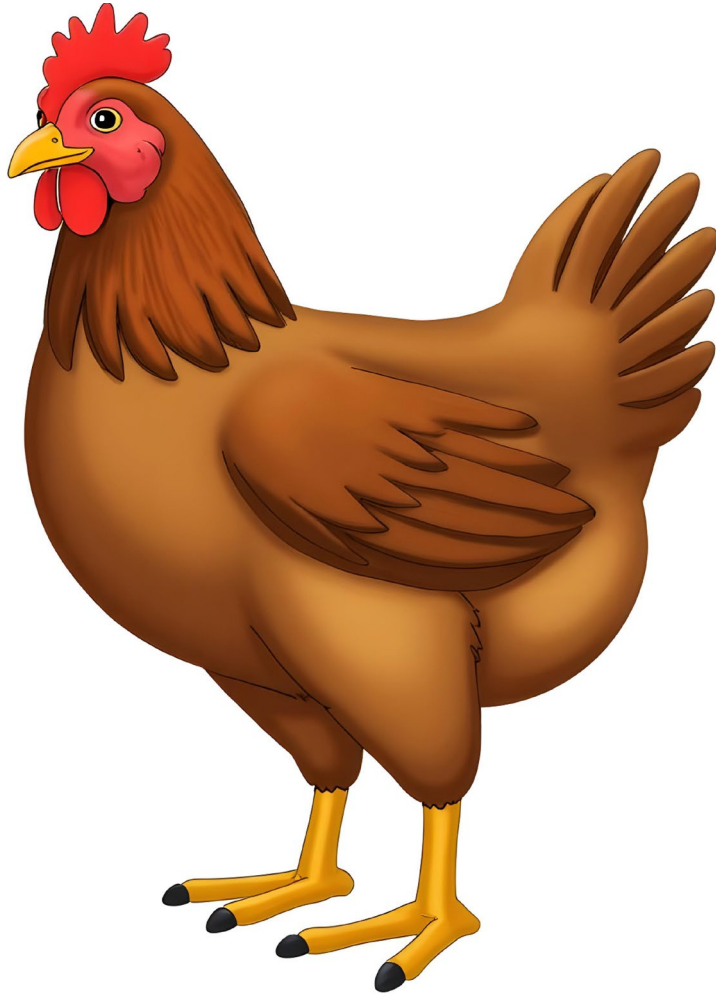
**Iphengwini**

**Ulwazi olungabalulekile kangako:  
Iphengwini ayikwazi ukundiza.**



**Ipigogo**

**Ulwazi olungabalulekile kangako:  
Ipigogo ayikwazi ukundiza.**



**Inkukhu**

**Ulwazi olungabalulekile kangako:  
Inkukhu ayikwazi ukundiza.**



**Upholi**

**Ulwazi olungabalulekile kangako:  
Upholi angafunda ukukhuluma.**



**Igw ababa**

**Ulwazi olungabalulekile kangako:  
Amagwababa angazilingisa  
ezinye izilwane.**



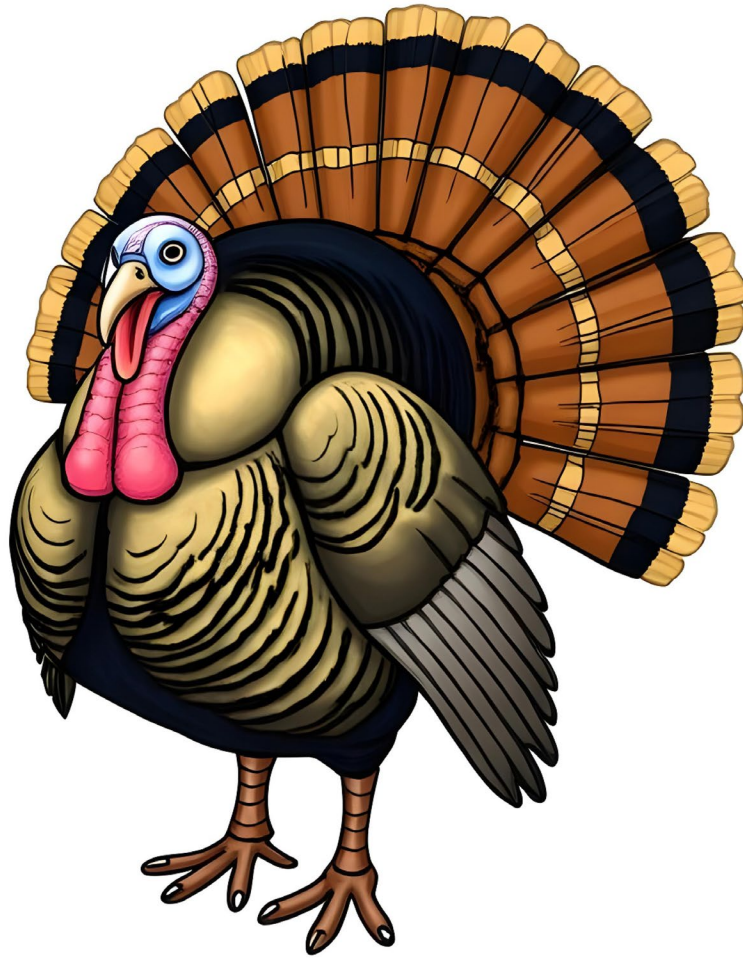
# Isiqophamuthi

**Ulwazi olungabalulekile kangako:  
Isiqophamuthi sisebenza emini  
kuphela.**



**Ilulwane**

**Ulwazi olungabalulekile kangako:  
Ilulwane lihlala ezindaweni  
ezimnyama.**



**Ikalkuni**

**Ulwazi olungabalulekile kangako:  
Amakalikuni ayakwazi ukugijima  
kakhulu.**



**Isiw oni**

**Ulwazi olungabalulekile kangako:  
Amasiwoni ayizinyoni  
zasemanzini.**



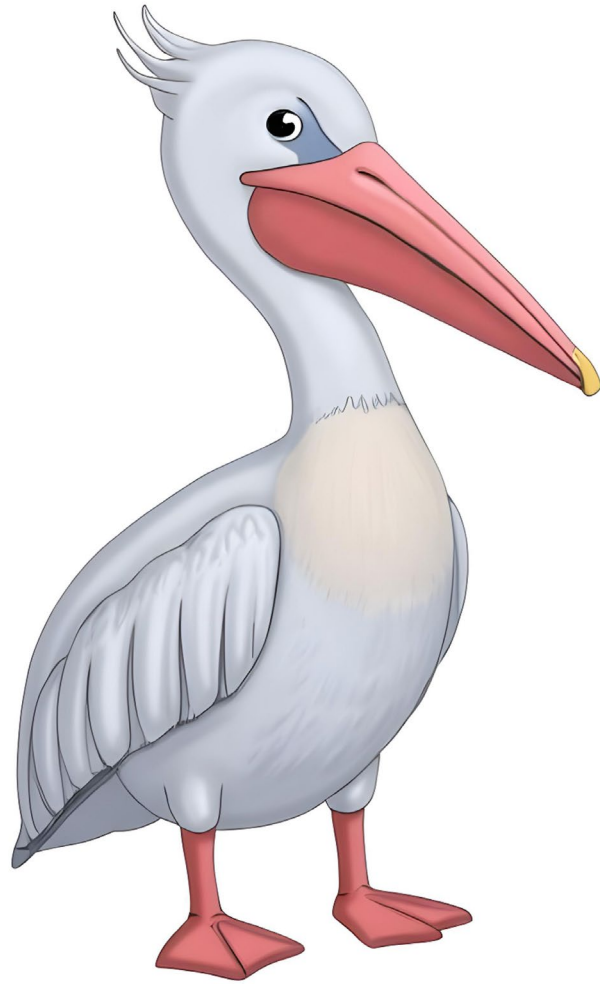
**Indwa**

**Ulwazi olungabalulekile kangako:  
Indwa iyinyoni kazwelonke  
waseNingizimu Afrika.**



**Umakholwase**

**Ulwazi olungabalulekile kangako:  
Izimpiko ezibomvana  
zikhambolwase zivela ekudleni  
kwazo.**



**Ifuba**

**Ulwazi olungabalulekile kangako:  
Ifuba linomlomo omkhulu.**



**Unogolantethe**

**Ulwazi olungabalulekile kangako:  
Unogolantethe udla inyama  
kuphela.**



**Ukhozi**

**Ulwazi olungabalulekile kangako:  
Ukhozi lungaphila iminyaka  
engama-30.**



**Ijuba**

**Ulwazi olungabalulekile kangako:  
Amajuba abona ezw e kahle  
kakhulu.**



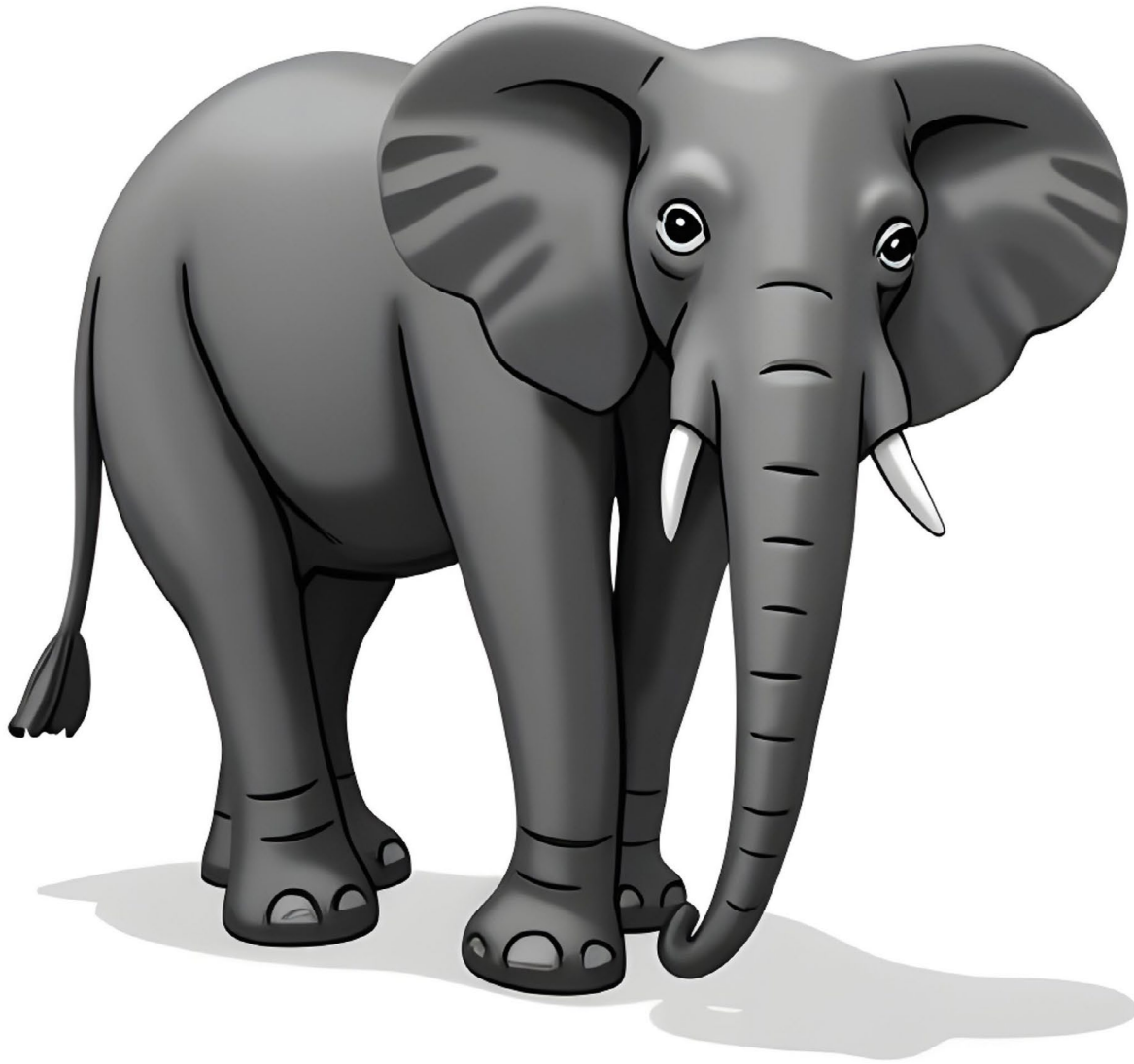
**Inkankane**

**Ulwazi olungabalulekile kangako:  
Inkankane ikhala kuzwakale  
kakhulu.**



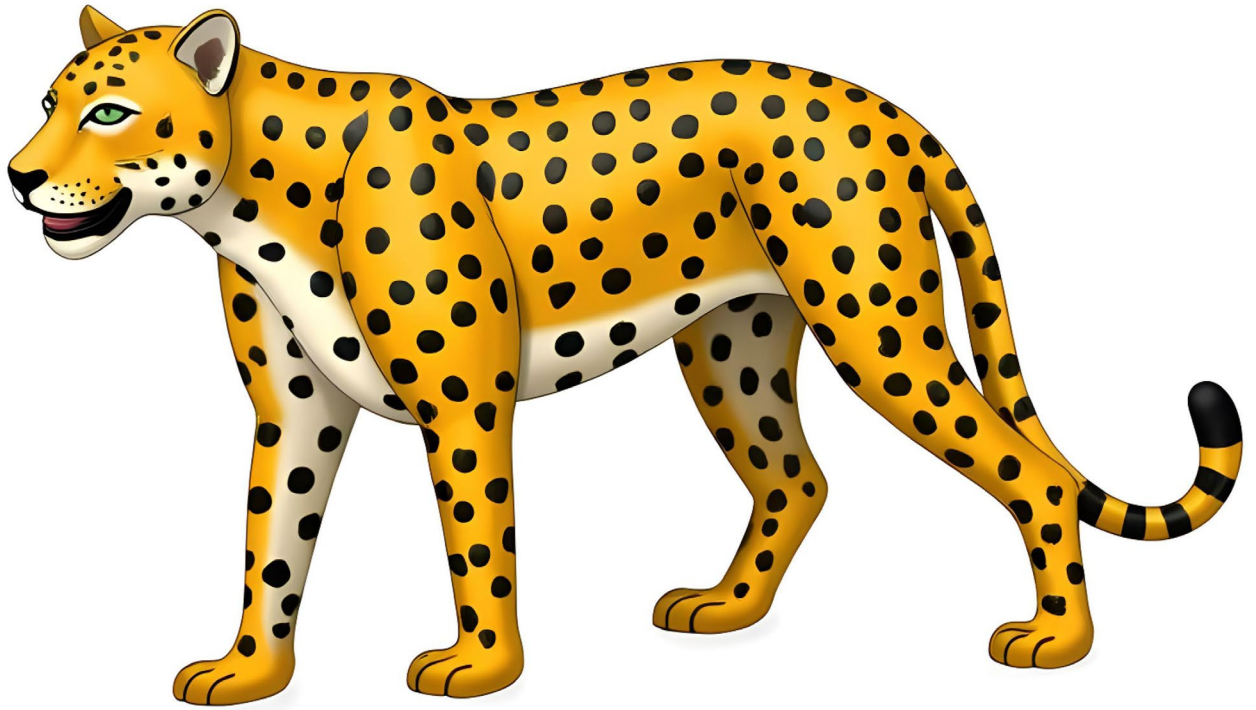
**Ibhubesi**

**Ulwazi olungabalulekile kangako:  
Ibhubesi liyingx enye yezilwane  
eziNkulu Eziyisihlanu.**



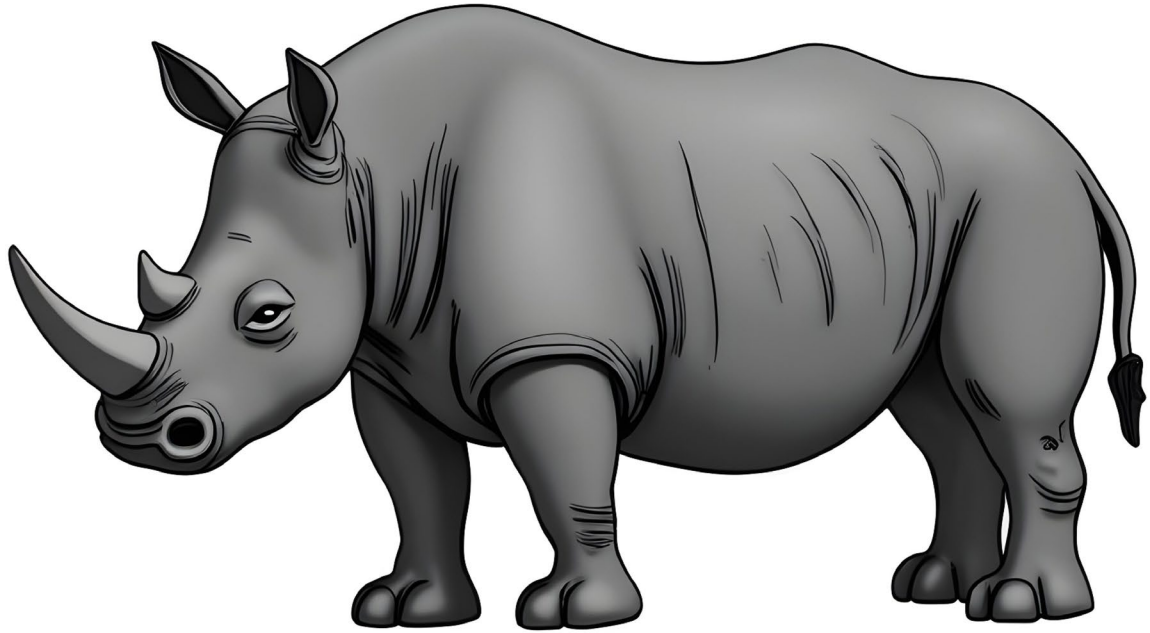
**Indlovu**

**Ulwazi olungabalulekile kangako:  
Indlovu iyingxenye yezilwane  
eziNkulu Eziyisihlanu.**



**Ingwe**

**Ulwazi olungabalulekile kangako:  
Ingwe iyingxenye yezilwane  
eziNkulu Eziyisihlanu.**



**Ubhejane**

**Ulwazi olungabalulekile kangako:  
Ubhejane uyingxenye yezilwane  
eziNkulu Eziyisihlanu.**



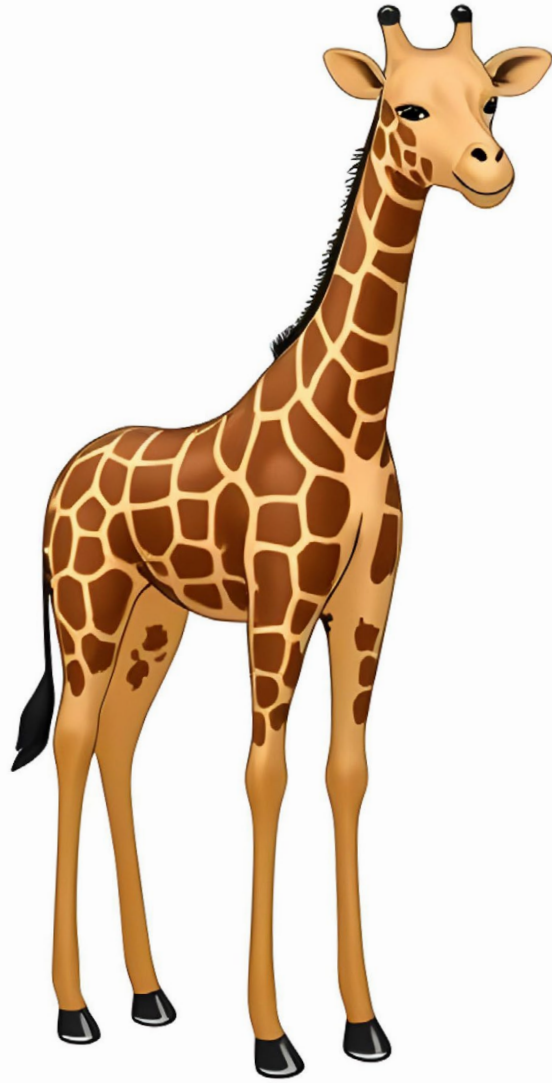
**Inyathi**

**Ulwazi olungabalulekile kangako:  
Inyathi iyingx enye yezilwane  
eziNkulu Eziyisihlanu.**



**Indlozi**

**Ulwazi olungabalulekile kangako:  
Izindlozi zingamak ati amakhulu  
kunawo wonke.**



**Indlulamthi**

**Ulwazi olungabalulekile kangako:  
Izindlulamithi ziyizilwane  
ezincelisayo ezincane kunazo  
zonke.**



**Ikhangu**

**Ulwazi olungabalulekile kangako:  
Ikhangaru isebenzisa umsila  
wayo ukuzimelela.**



**Isambane**

**Ulwazi olungabalulekile kangako:  
Isambane sinolimi olude  
olunamathelayo.**



**Ihlosi**

**Ulwazi olungabalulekile k angako:  
Ihlosi lihogela k ahle kakhulu.**



**Indluzele**

**Ulwazi olungabalulekile kangako:  
Umntwana wendluzele kuthiwa  
isixhumo.**



**Ingw ejeje**

**Ulwazi olungabalulekile kangako:  
Amazinyo engwejeje  
angaphambili aw ayeki ukukhula.**



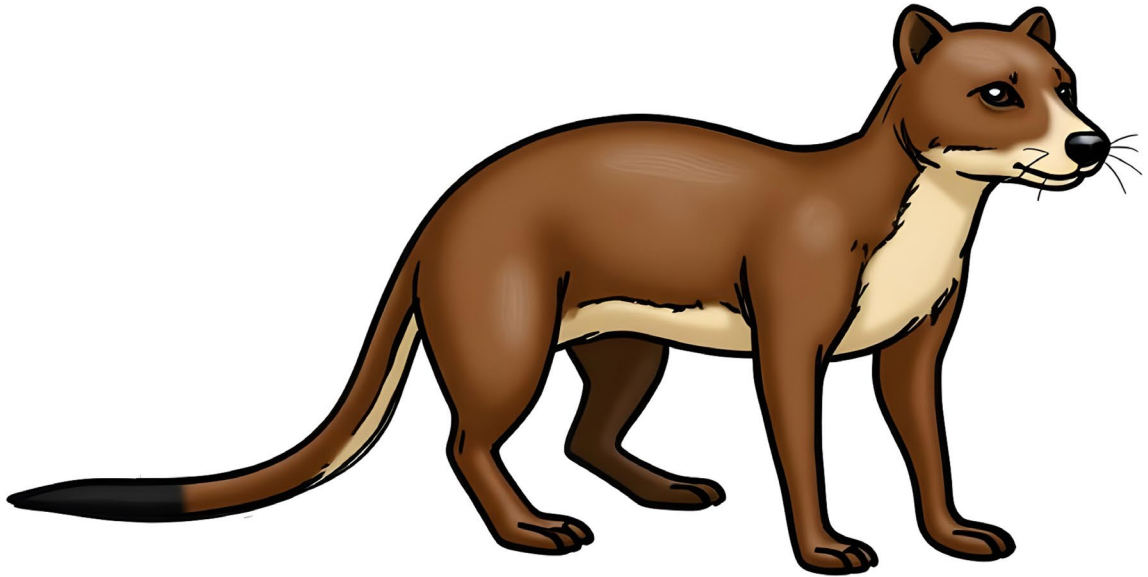
**Imvukuzane**

**Ulwazi olungabalulekile kangako:  
Izimvukuzane aziboni.**



**Ishimpanzi**

**Ulwazi olungabalulekile kangako:  
Ishimpanzi iyakwazi ukufunda  
ulimi lwezimpawu.**



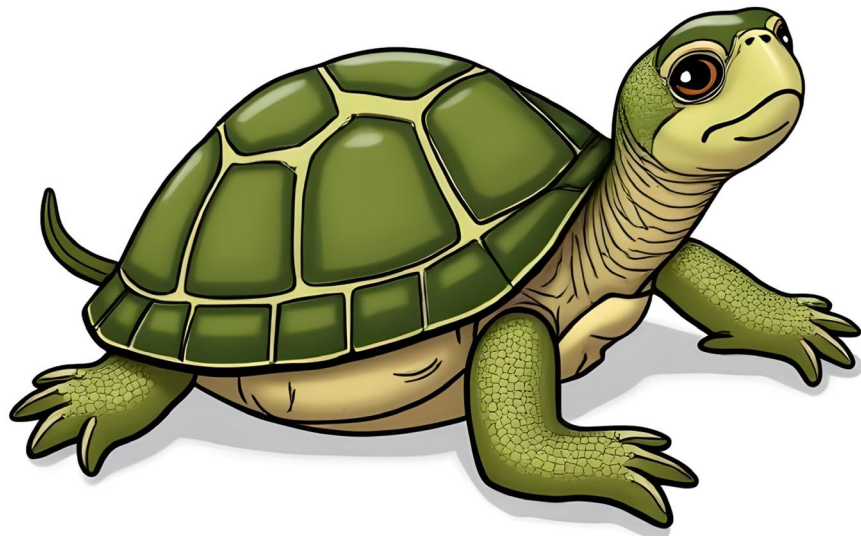
# Uchakide

**Ulwazi olungabalulekile kangako:  
Uchakide unezinzipho ezibukhali  
zokulwa nenyoka.**



**Impak a**

**Ulwazi olungabalulekile kangako:  
Impak a iyingxenye yomndeni  
wamakati.**



**Ufudu**

**Ulwazi olungabalulekile kangako:  
Ufudu luhlala ezweni.**



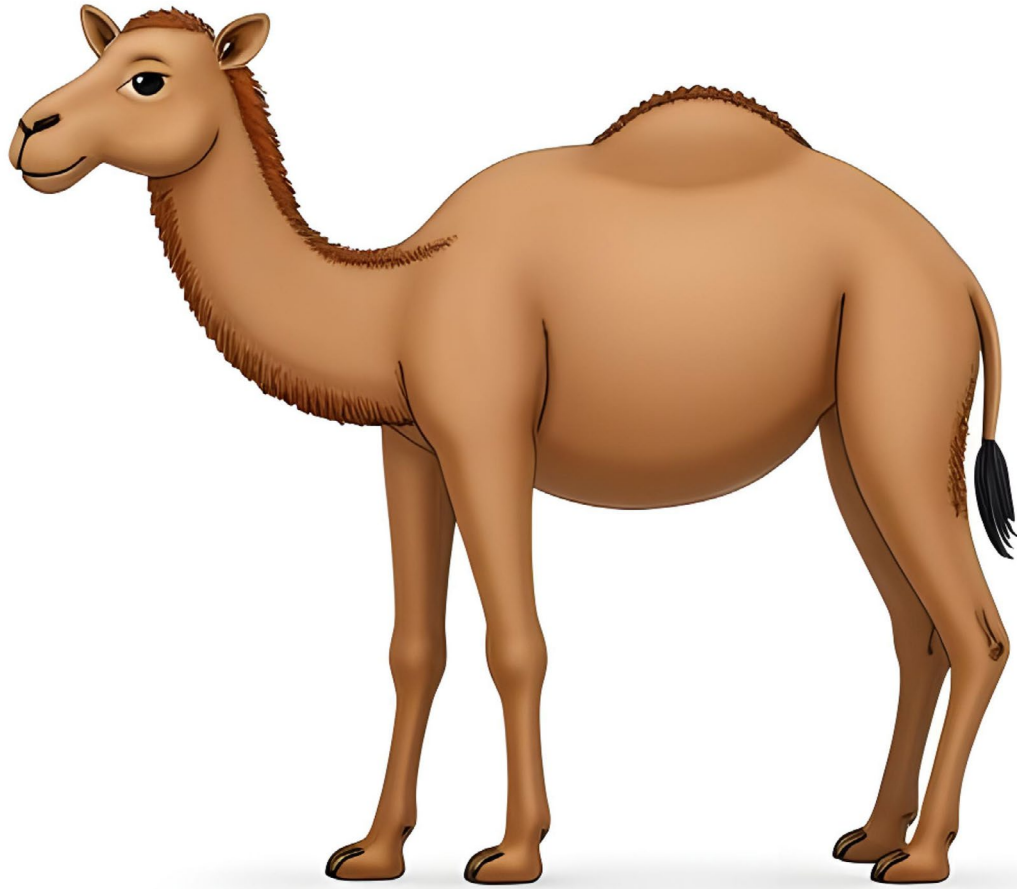
**Ingungumbane**

**Ulwazi olungabalulekile kangako:  
Ingungumbane iyakwazi  
ukukhwela ezihlahleni ukuze  
ithole ukudla.**



**Impungushe**

**Ulwazi olungabalulekile kangako:  
Izimpungushe zizingela  
ziwumhlambi.**



**Inkamela**

**Ulwazi olungabalulekile kangako:  
Ikamela lingathwala imithwalo  
esindayo.**



**Idube**

**Ulwazi olungabalulekile kangako:  
Idube liyakwazi ukulala limile.**



**Ikho wala**

**Ulwazi olungabalulekile kangako:  
Amakhowala ahlala e-Australia.**



**Irakhuni**

**Ulwazi olungabalulekile kangako:  
Amarakhuni anombela kahle  
kakhulu.**



**Impisi**

**Ulwazi olungabalulekile kangako:  
Izimpisi zizingela ziwumhlambi.**



**Ibhele**

**Ulwazi olungabalulekile kangako:  
Amabhele abhukuda kahle  
kakhulu.**



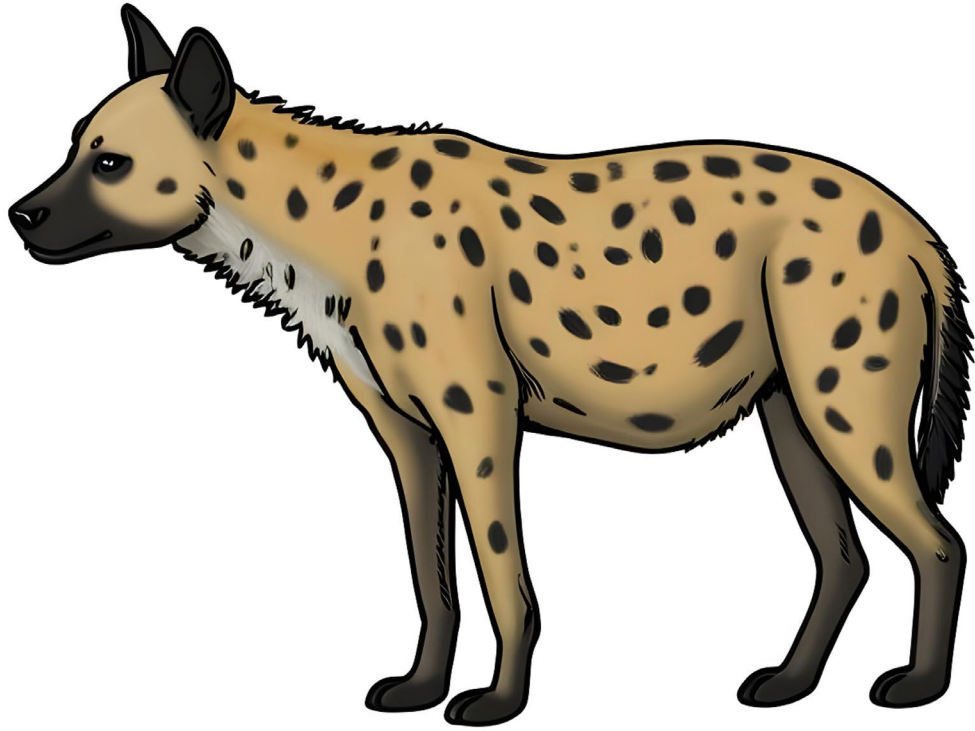
**I- amadilo**

**Ulwazi olungabalulekile kangako:  
I-amadilo ingaziginqa ibe ibhola  
ukuzivikela.**



**Isandaw ana**

**Ulwazi olungabalulekile kangako:  
Isadwana ayinamazinyo.**



**Impisi**

**Ulwazi olungabalulekile kangako:  
Izimpisi zinamakhono amahle  
okuxazulula izinkinga.**



**Ububhibhi**

**Ulwazi olungabalulekile kangako:  
Ububhibhi bubona kahle kakhulu.**



**Iposamu**

**Ulwazi olungabalulekile kangako:  
Umsila weposamu awunaboya.**



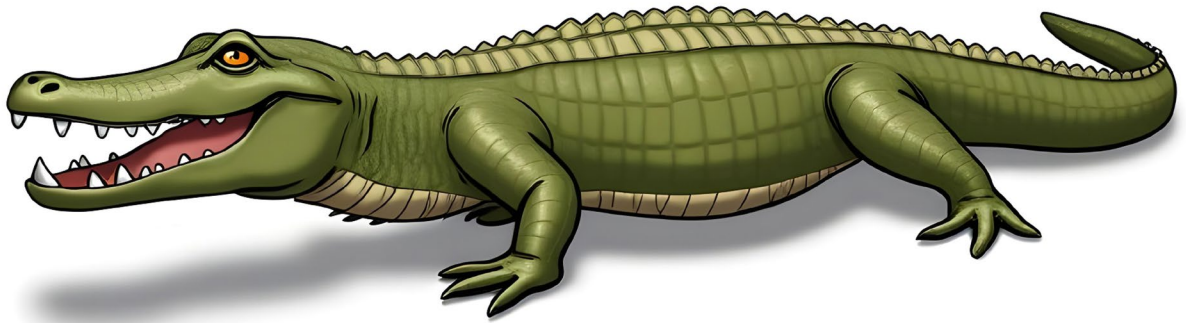
**Insele**

**Ulwazi olungabalulekile kangako:  
Amabheji ahlala ngaphansi  
komhlaba.**



**Ibhiva**

**Ulwazi olungabalulekile kangako:  
Amabhiva azizwa ephephe  
kakhulu emanzini.**



**Ingwenya**

**Ulwazi olungabalulekile kangako:  
Ingwenya inomhlathi oqine  
kakhulu.**



**Iphanda**

**Ulwazi olungabalulekile kangako:  
Amaphanda ayakwazi ukuhlamba  
nokukhwela emithini.**



**I- otha**

**Ulwazi olungabalulekile k angako:  
Ama-otha ayaxhawula.**



**Inhloni**

**Ulwazi olungabalulekile k angako:  
Inhloni ayikuthandi ukushisa.**



**Imfene**

**Ulwazi olungabalulekile kangako:  
Izimfene zinamazinyo amade.**



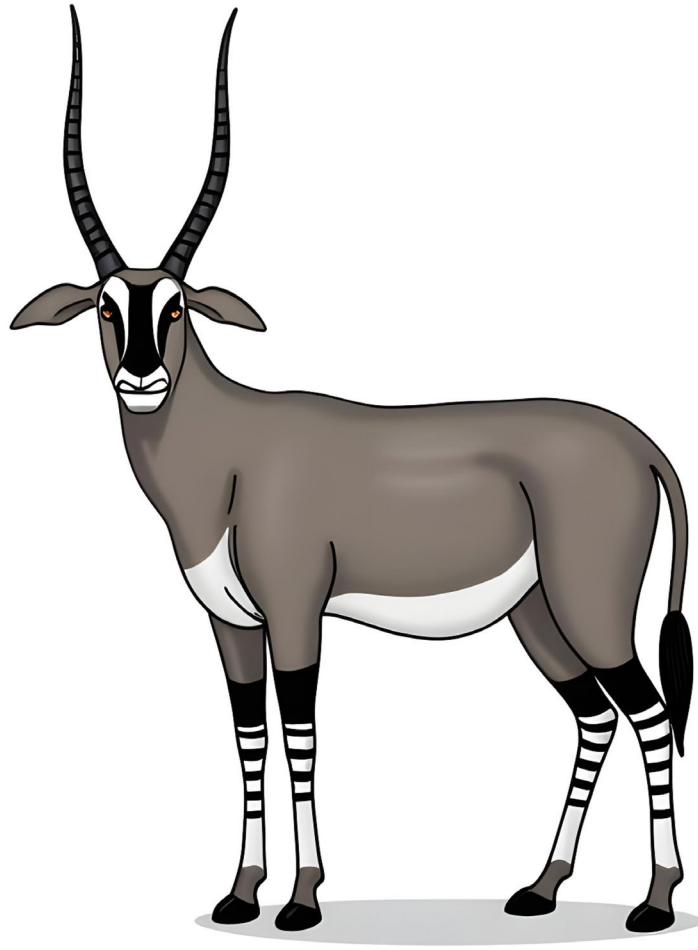
**Insephe**

**Ulwazi olungabalulekile kangako:  
Insephe iyakwazi ukugxuma  
emoyeni.**



**Impofu**

**Ulwazi olungabalulekile kangako:  
Impofu iyakwazi ukweqa  
uthango.**



# Umlindankomo

**Ulwazi olungabalulekile kangako:  
Umlindankomo usebenzisa  
izimpondo zawo njengesikhali.**



**Impala**

**Ulwazi olungabalulekile kangako:  
Impala iyakwazi ukweqa iye  
phezulu.**



**Ibhulekhibhakhi**

**Ulwazi olungabalulekile kangako:  
Ibhulekhibhakhi isebenz a kakhulu  
emini.**



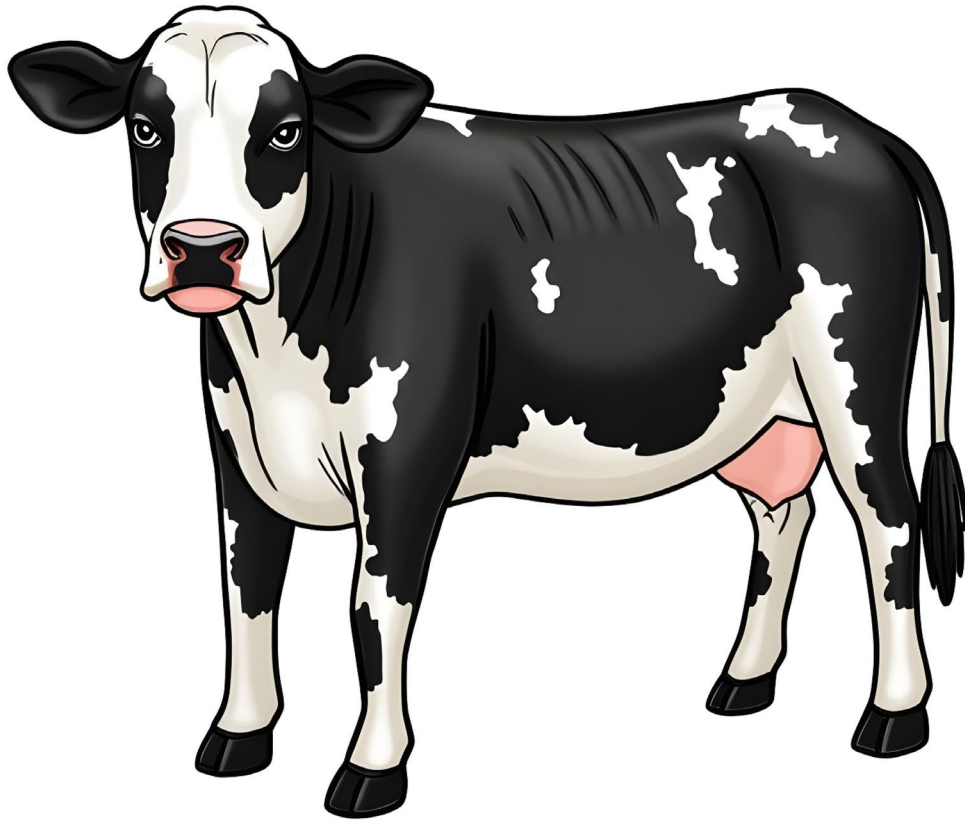
**Imbuzi**

**Ulwazi olungabalulekile kangako:  
Izimbuzi zifisa akhulu ukwazi.**



**Inkabi**

**Ulwazi olungabalulekile kangako:  
Izinkabi zinamandla k akhulu.**



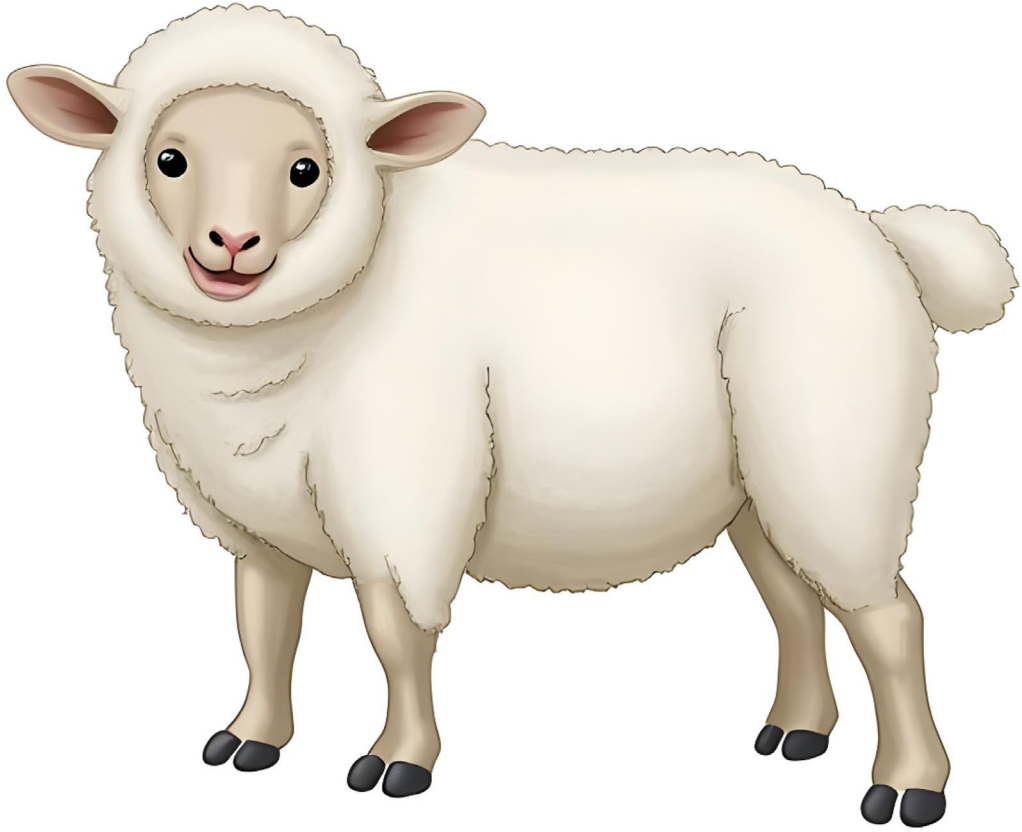
**Inkomazi**

**Ulwazi olungabalulekile kangako:  
Singaphuza ubisi oluvela  
ezinkomazini.**



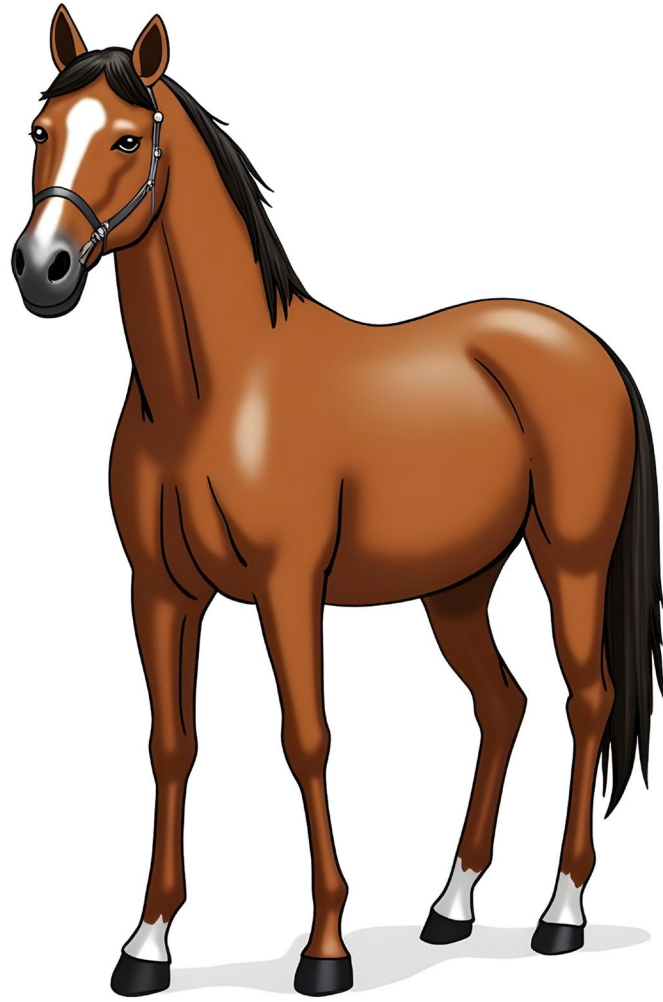
**Ingulube**

**Ulwazi olungabalulekile kangako:  
Izingulube azijuluki.**



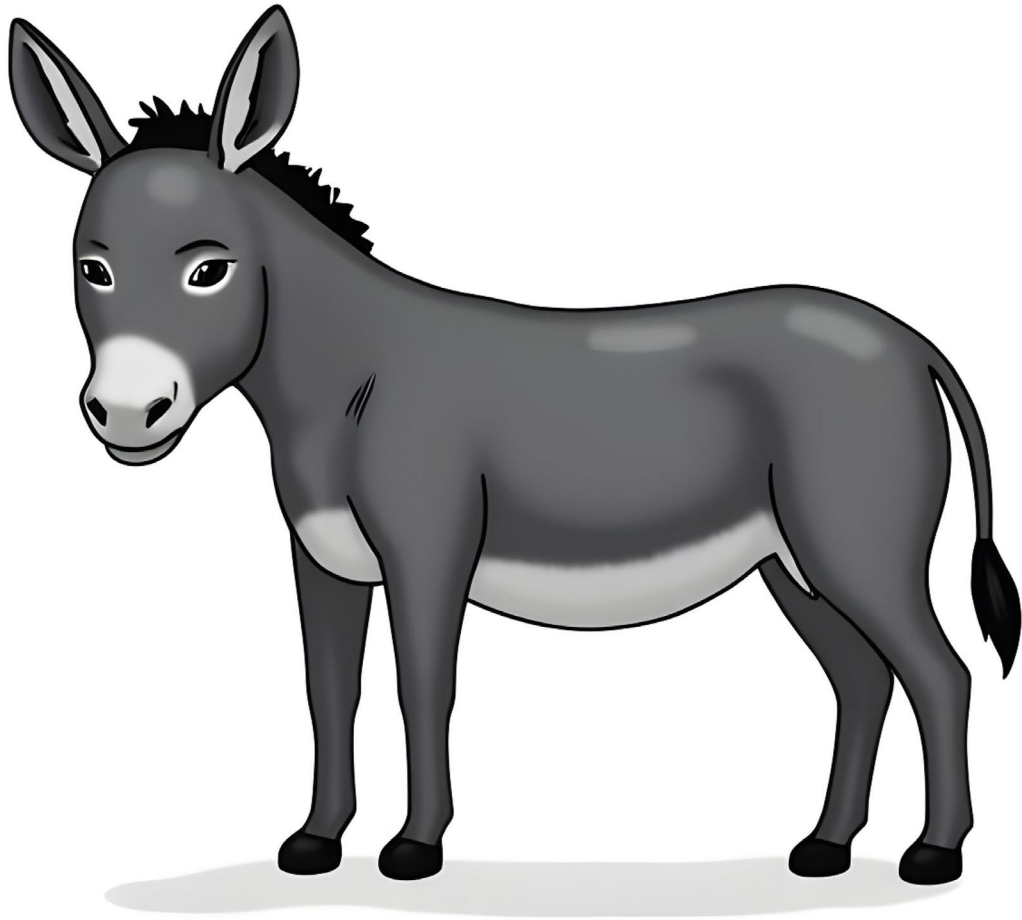
**Imvu**

**Ulwazi olungabalulekile kangako:  
Uboya bemvu busetshenziselwa  
ukwenza izingubo.**



**Ihashi**

**Ulwazi olungabalulekile kangako:  
Ihashi liyakw azi ukulala limile.**



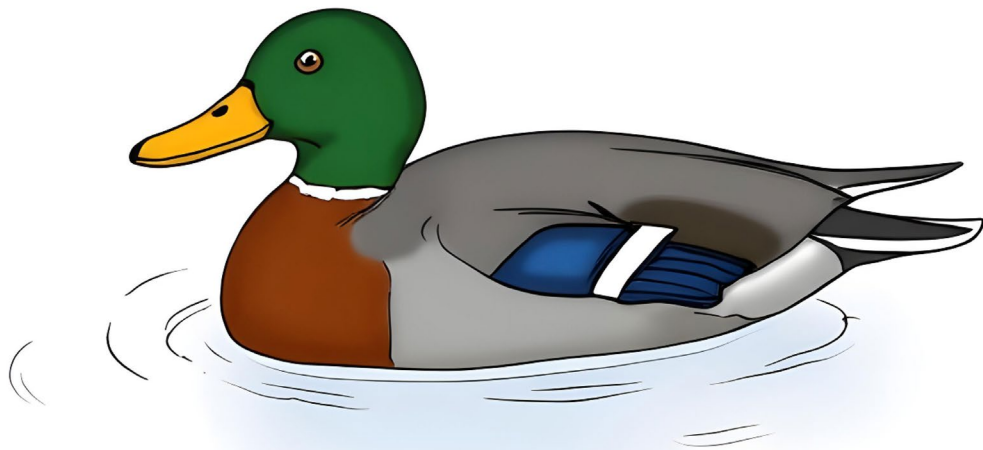
**Imbongolo**

**Ulwazi olungabalulekile kangako:  
Amadlebe amakhulu embongolo  
ayigcina ipholile.**



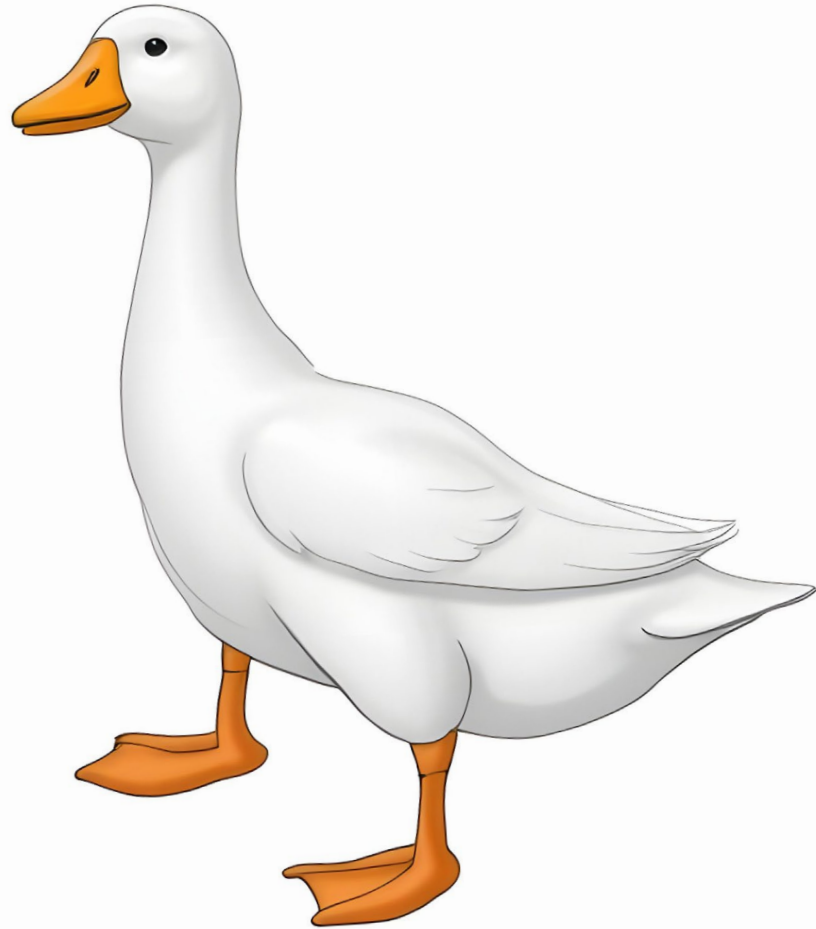
**llama**

**Ulwazi olungabalulekile kangako:  
Amalama anengqondo ekhaliphe  
kakhulu.**



**Idada**

**Ulwazi olungabalulekile kangako:  
Amadada ayakw azi ukuhlamba.**



**Ihansi**

**Ulwazi olungabalulekile kangako:  
Amahansi achitha isikhathi sawo  
esiningi ezweni.**



**Ijuba**

**Ulwazi olungabalulekile kangako:  
Amajuba awawafaki amakhanda  
awo ngaphansi kwezimpiko zawo.**



**Isele**

**Ulwazi olungabalulekile kangako:  
Amasele angaba nanoma ngabe  
yimuphi umbala.**



**Inyok a**

**Ulwazi olungabalulekile kangako:  
Izinyok a zilala ziw avulile amehlo  
azo.**



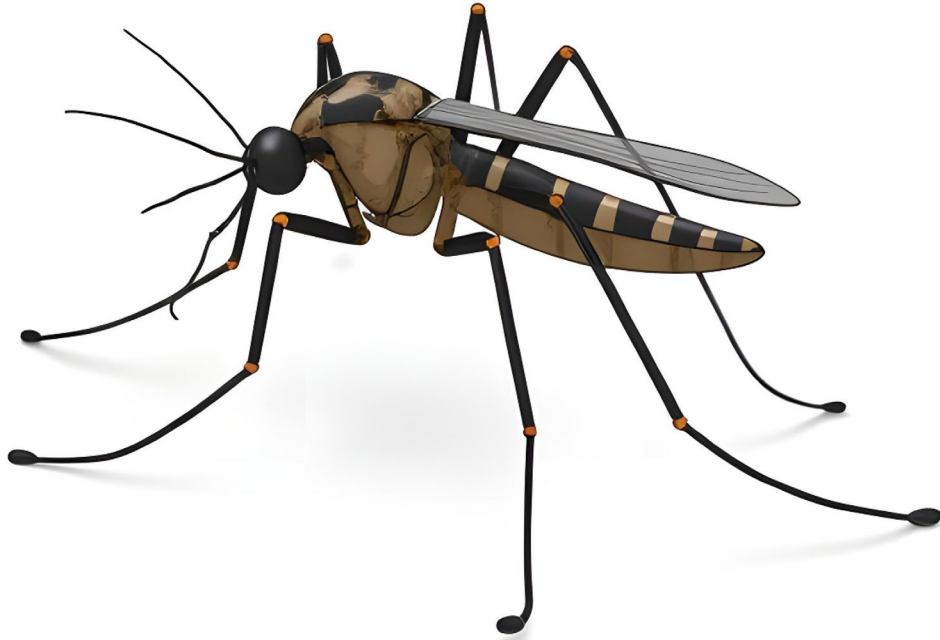
**Umnenke**

**Ulwazi olungabalulekile kangako:  
Igobolondo lomnenke likhula  
nawo.**



# Ulwembu

**Ulwazi olungabalulekile kangako:  
Izilwembu zinemilenze  
eyisishiyagalombili.**



# Umiyane

**Ulwazi olungabalulekile kangako:  
Omiyane badla izithelo namanzi  
ezimbali zezimila.**



**Inyosi**

**Ulwazi olungabalulekile kangako:  
Izinyosi zisabalalisa impo va esiza  
ekuqhakaziseni izimbali.**



**Ingcongconi**

**Ulwazi olungabalulekile kangako:  
Izingcongconi zidla ezinye  
izinambuzane.**



**Uvemvane**

**Ulwazi olungabalulekile kangako:  
Izivemvane zinambitha  
ngokusebenzisa izinyawo zazo.**



# Isibungu

**Ulwazi olungabalulekile kangako:  
Isibungu asinaw o amehlo.**



**Intuthwane**

**Ulwazi olungabalulekile kangako:  
Izintuthwane ziyakwazi ukuphila  
nabantu.**



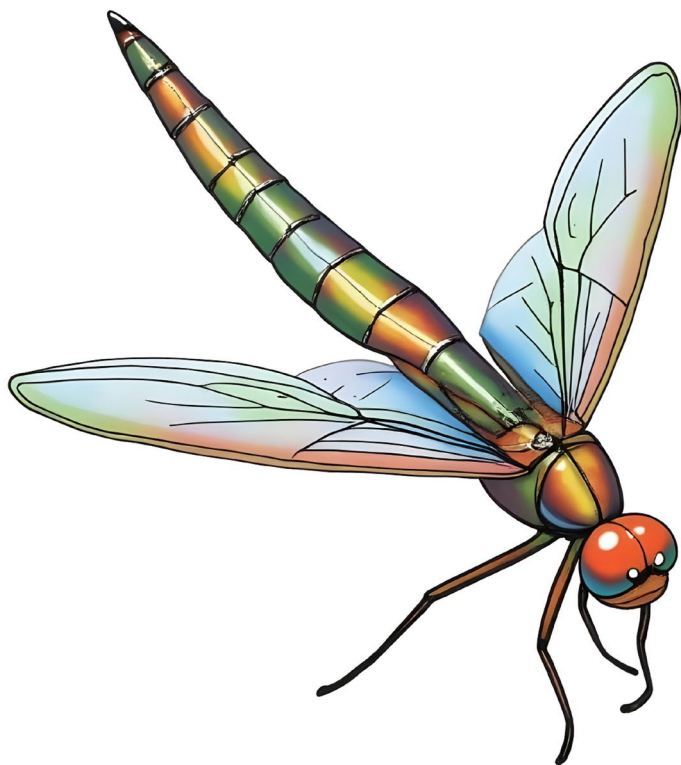
**Izeze**

**Ulwazi olungabalulekile kangako:  
Amazeze awanazo izindlebe.**



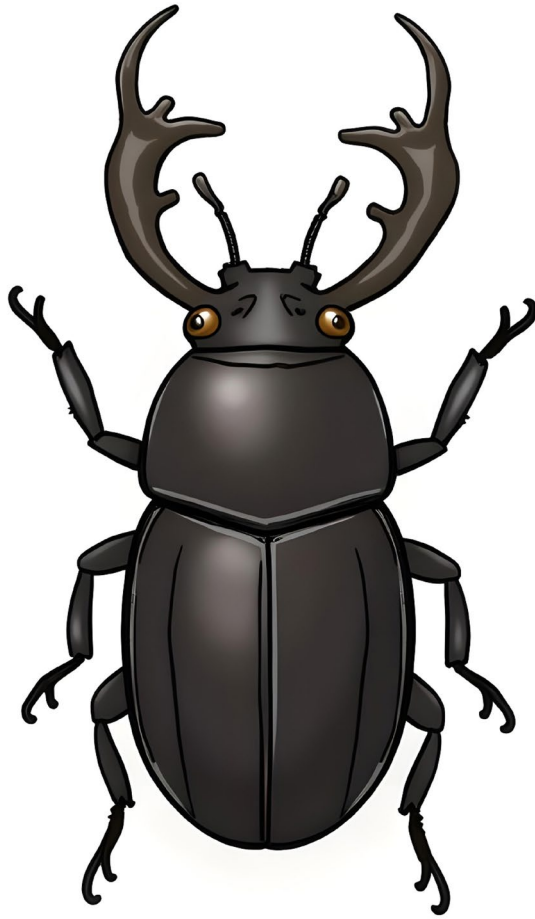
**Icimbi**

**Ulwazi olungabalulekile kangako:  
Amacimbi awanawo amazinyo.**



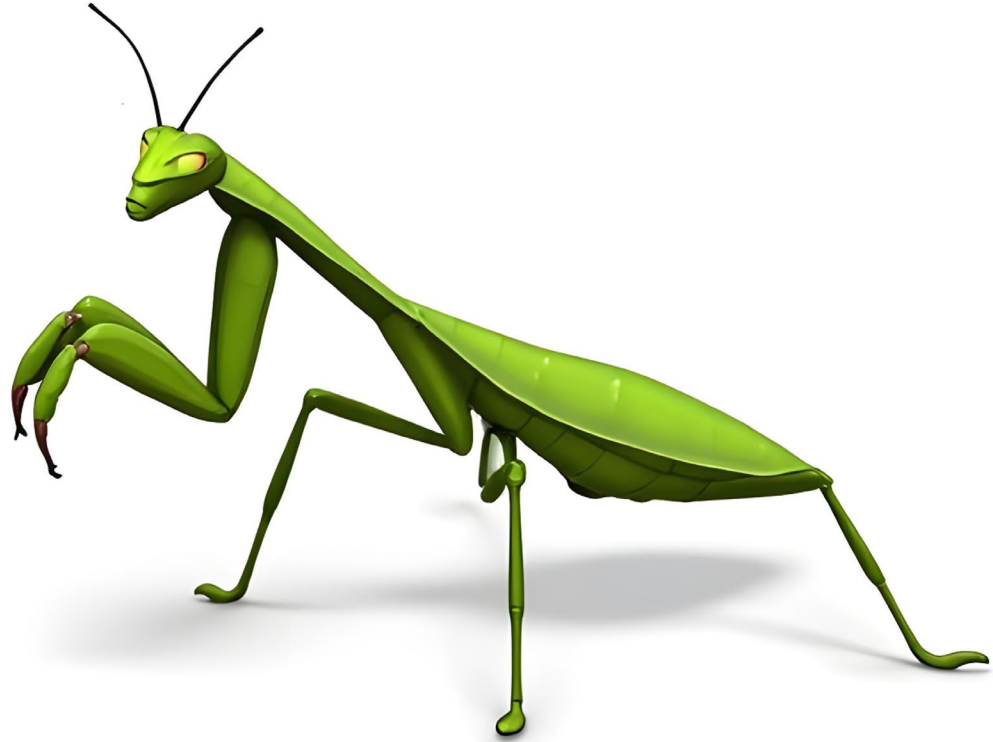
# Uzekamnazi

**Ulwazi olungabalulekile kangako:  
Ozekamanzi bandiza  
ngokushesha.**



**Ibhungane**

**Ulwazi olungabalulekile kangako:  
Amabhungane adla ukudla  
okuncane kakhulu.**



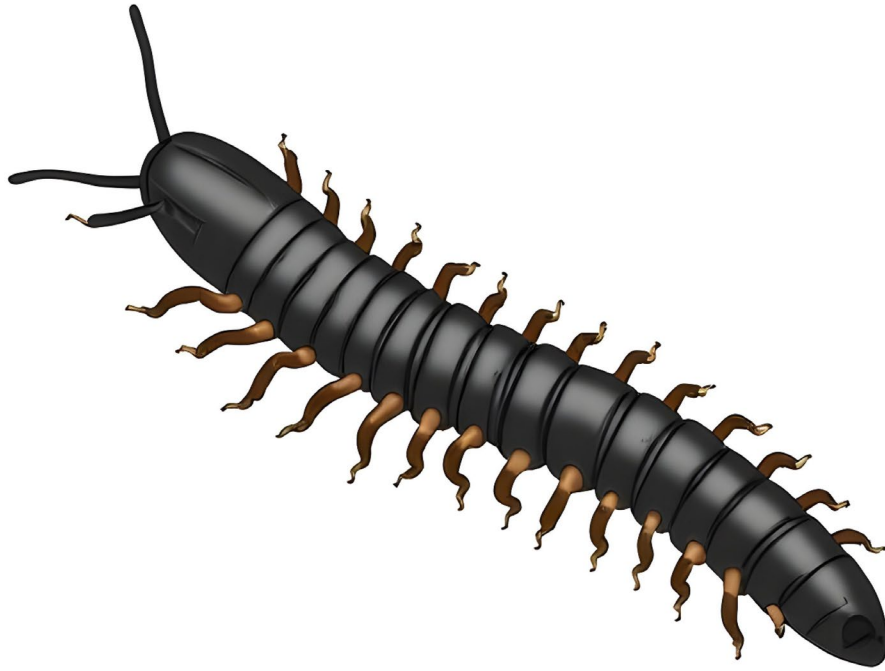
**Isithw alambiza**

**Ulwazi olungabalulekile kangako:  
Isithwalambiza sinendlebe  
eyodwa kuphela esifubeni saso.**



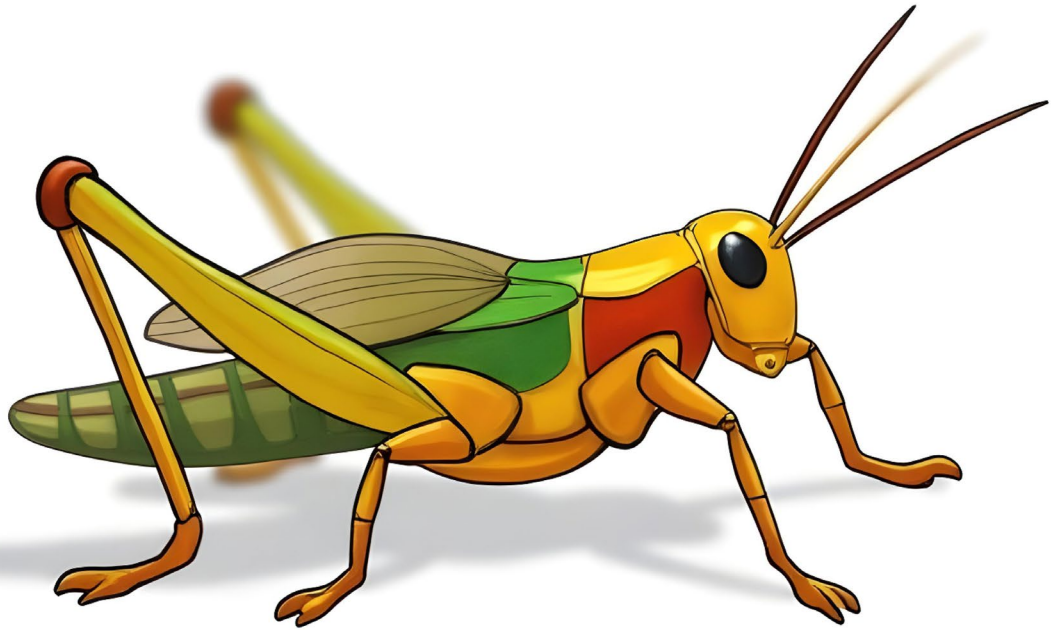
# Ufezela

**Ulwazi olungabalulekile kangako:  
Ofezela banobuthi.**



# Ishongololo

**Ulwazi olungabalulekile kangako:  
Amashongololo adla amaqabunga  
nezithelo.**



**Intethe**

**Ulwazi olungabalulekile kangako:  
Intethe inemilenze yangemuva  
enamandla.**



**Igundane**

**Ulwazi olungabalulekile kangako:  
Amagundane angadla ukudla  
okuningi kakhulu.**



**Igundane**

**Ulwazi olungabalulekile kangako:  
Amagundane angangena  
ezimbotsheni ezincane.**



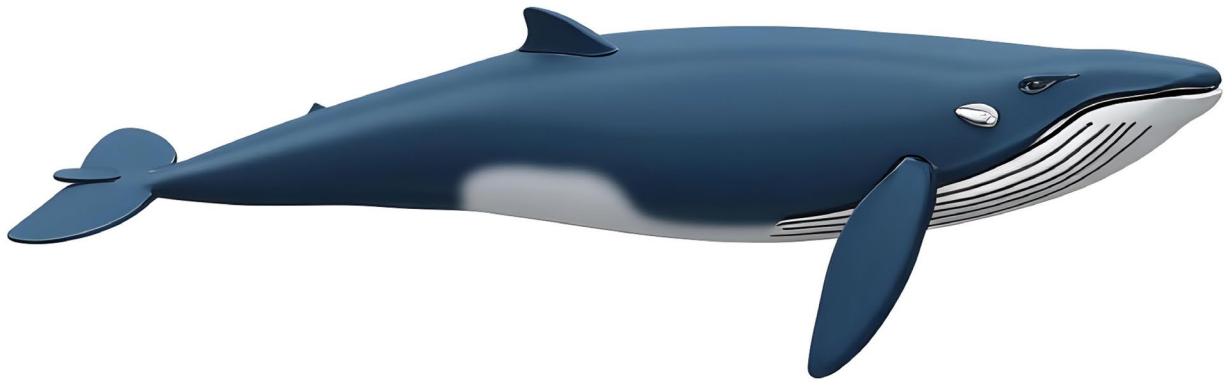
**Ishiphumanki**

**Ulwazi olungabalulekile kangako:  
Amashiphumanki agcina ukudla  
emihlathini yawo.**



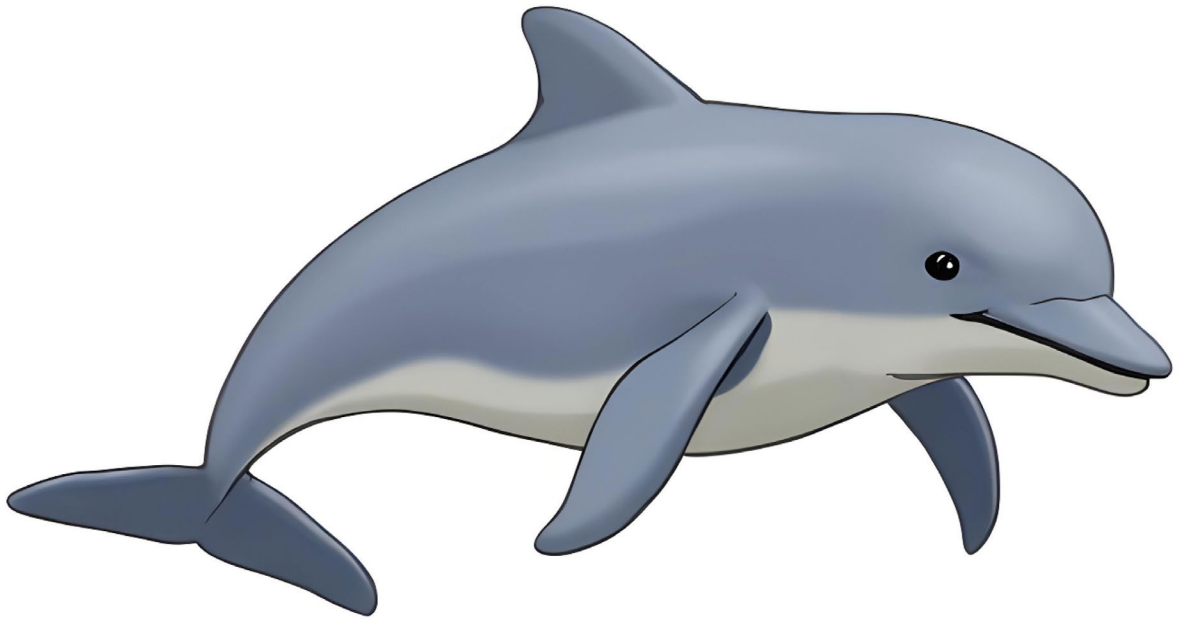
**Iginipigi**

**Ulwazi olungabalulekile kangako:  
Amaginipigi anezinzwani ezine  
emilenzeni yawo yangaphambili  
nezinzwani ezintathu emilenzeni  
yangemuva.**



**Umkhomo**

**Ulwazi olungabalulekile kangako:  
Imikhomo ifundisa amantw ana  
bayo amakhono empilo.**



**Inhlengethwa**

**Ulwazi olungabalulekile kangako:  
Amahlengethwa alala e vule ihlo  
linye.**



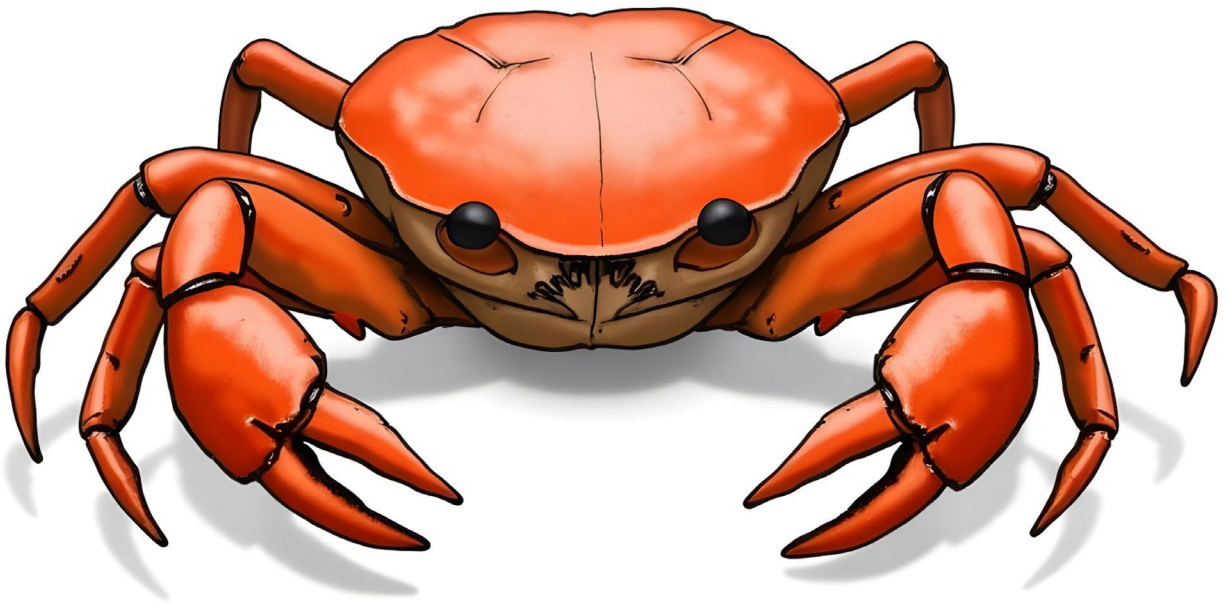
**lthek etheke**

**Ulwazi olungabalulekile kangako:  
Itheke theke alinabo ubuchopho.**



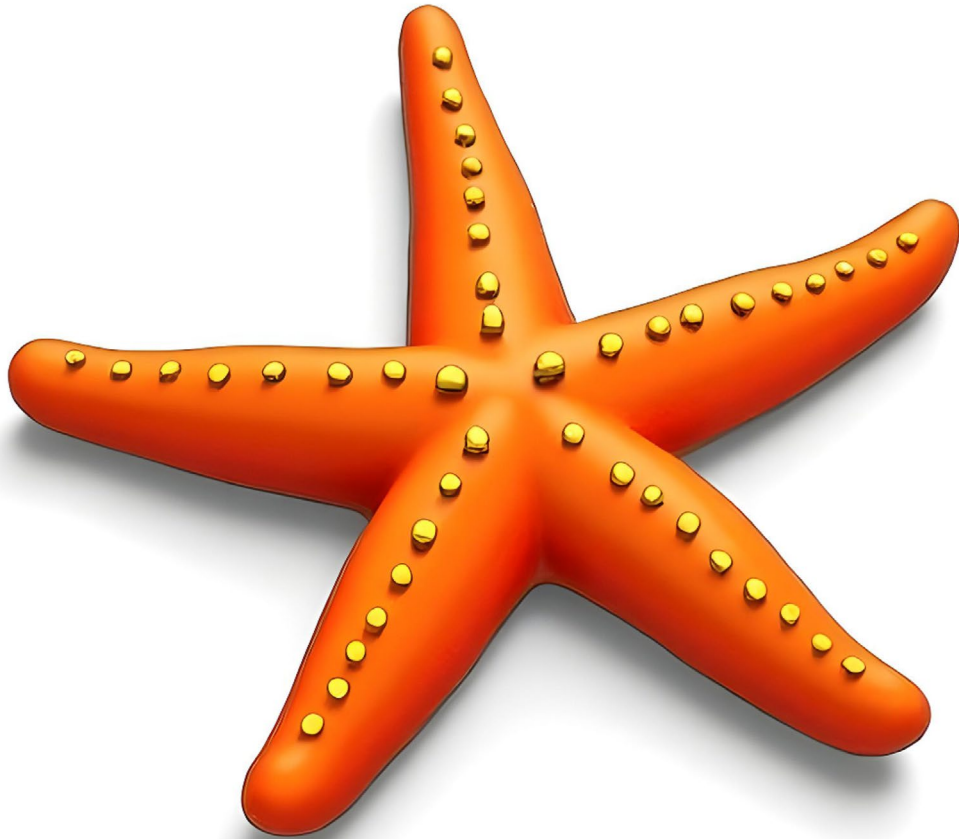
**Imbambela**

**Ulwazi olungabalulekile kangako:  
Ingalo ngayinye yembambela  
iyakwazi ukwenza imisebenzi  
ehlukene ngesikhathi esisodwa.**



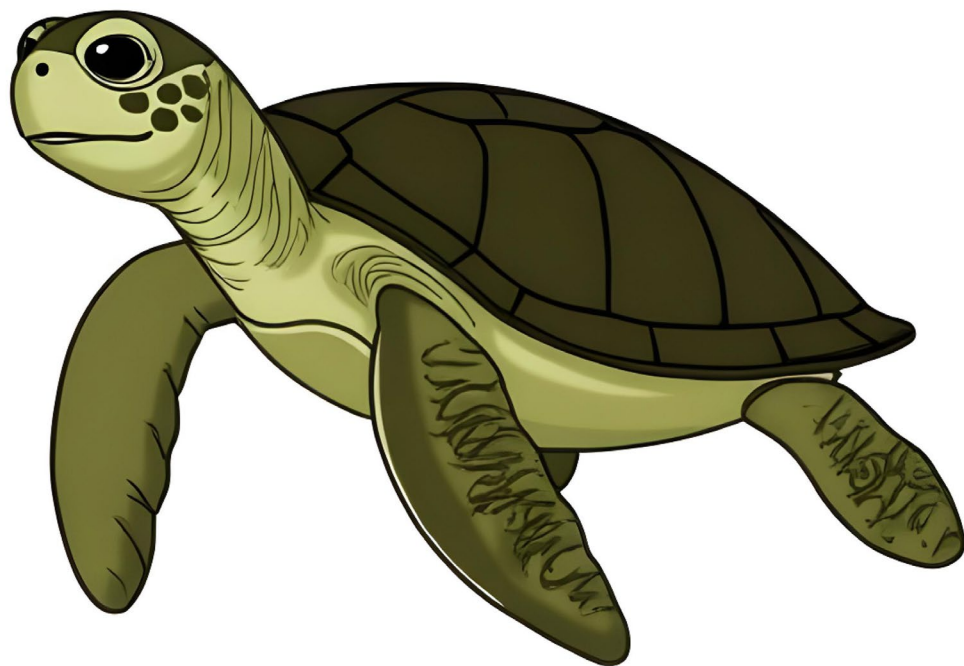
**Inkalankala**

**Ulwazi olungabalulekile kangako:  
Izinkalankala zihamba luk eke.**



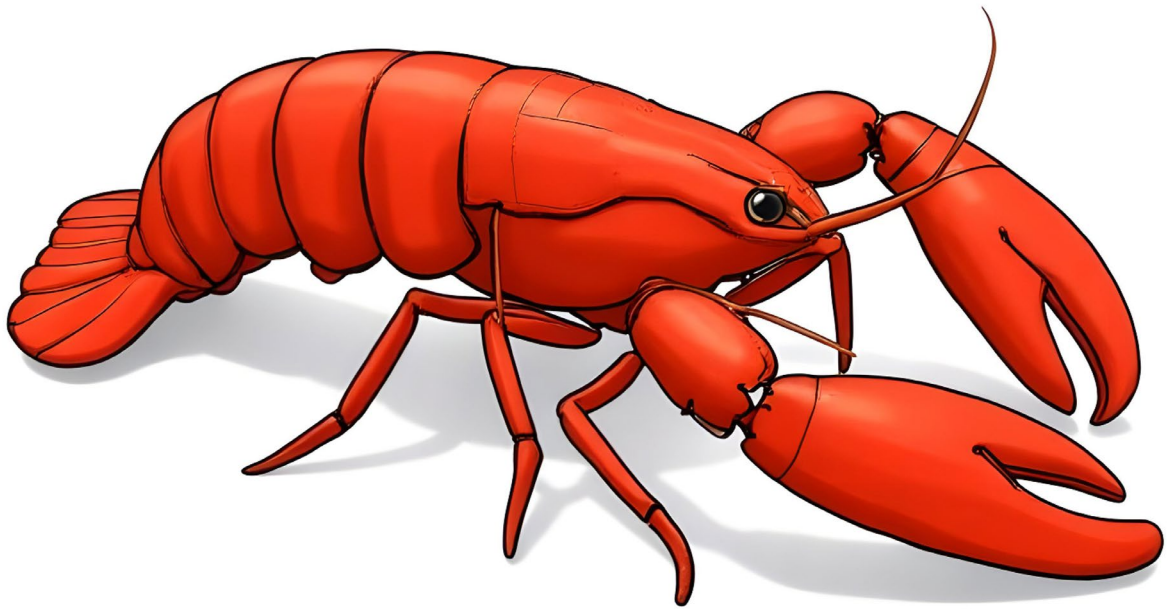
**Isitafishi**

**Ulwazi olungabalulekile kangako:  
Inkanyezi yolwandle ayinalo igazi.**



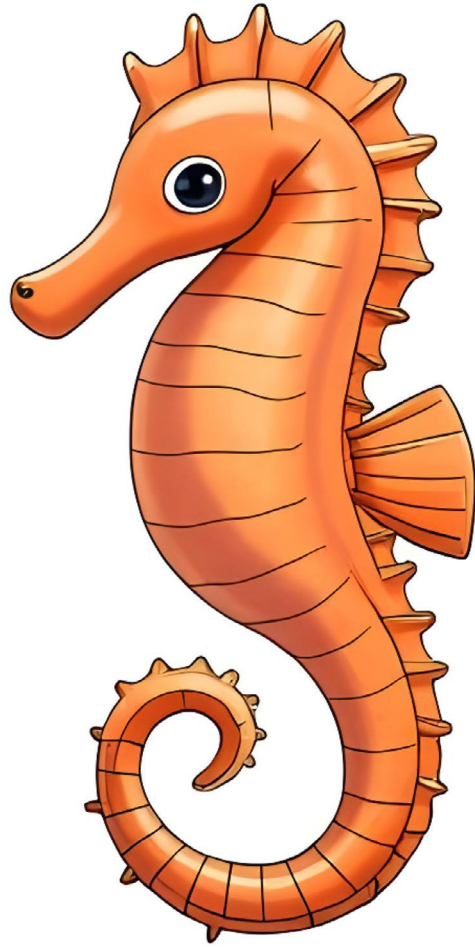
**Intandane**

**Ulwazi olungabalulekile kangako:  
Intandane ilala ngaphansi  
kwamanzi.**



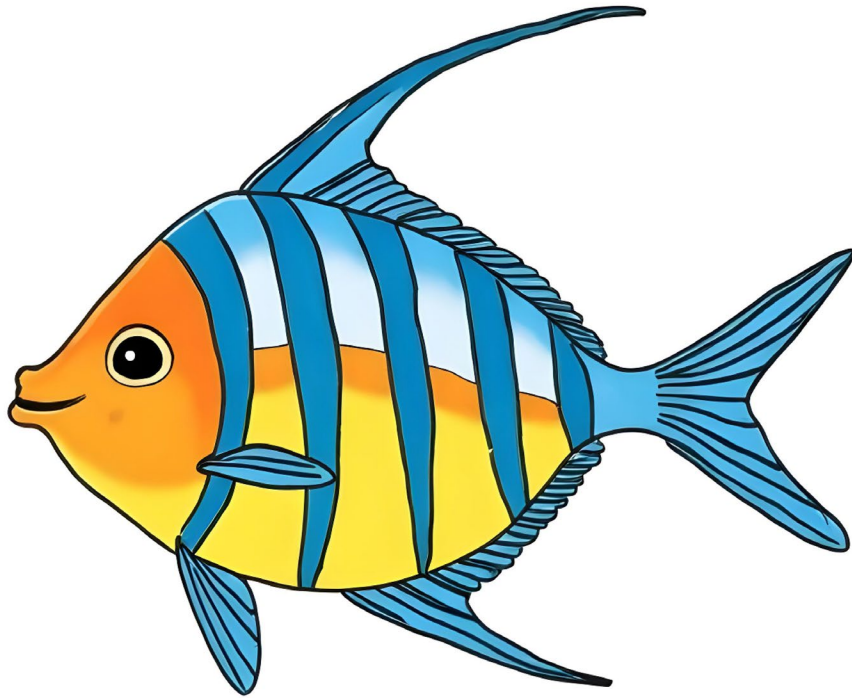
**Isikhuphashe**

**Ulwazi olungabalulekile kangako:  
Izikhuphashe ziyakwazi  
ukumila izingalo ezintsha emva  
kokulahlekelwa ingalo.**



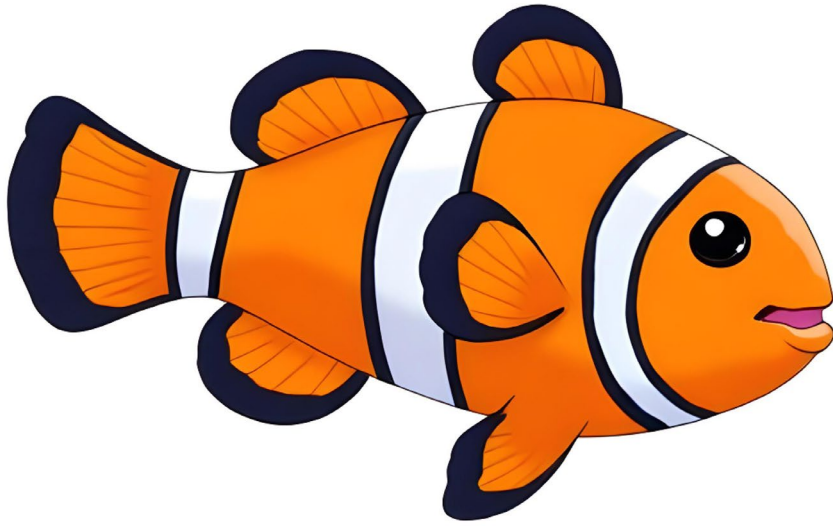
**Ihhashi lolw andle**

**Ulwazi olungabalulekile kangako:  
Amahhashi olwandle awakwazi  
ukuhlamba kahle.**



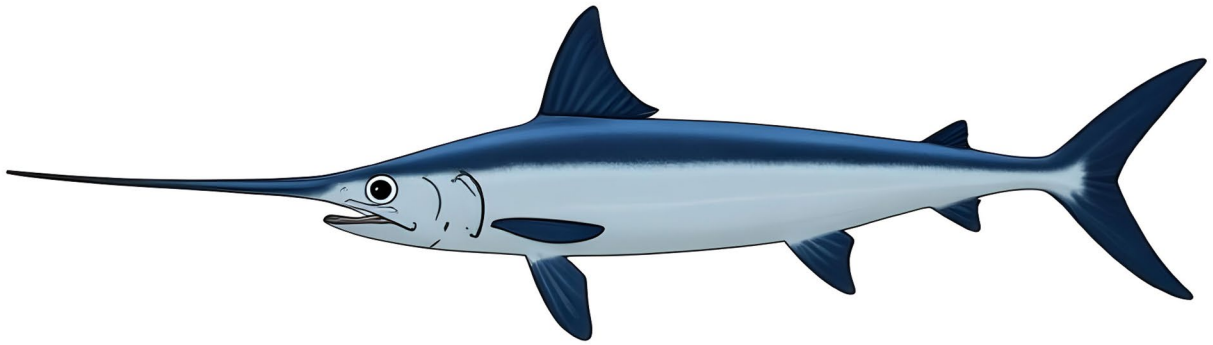
**Inhlanzi enesimo  
sengelosi**

**Ulwazi olungabalulekile kangako:  
Umzimba wenhlanzi enesimo  
sengelosi uyisicaba.**



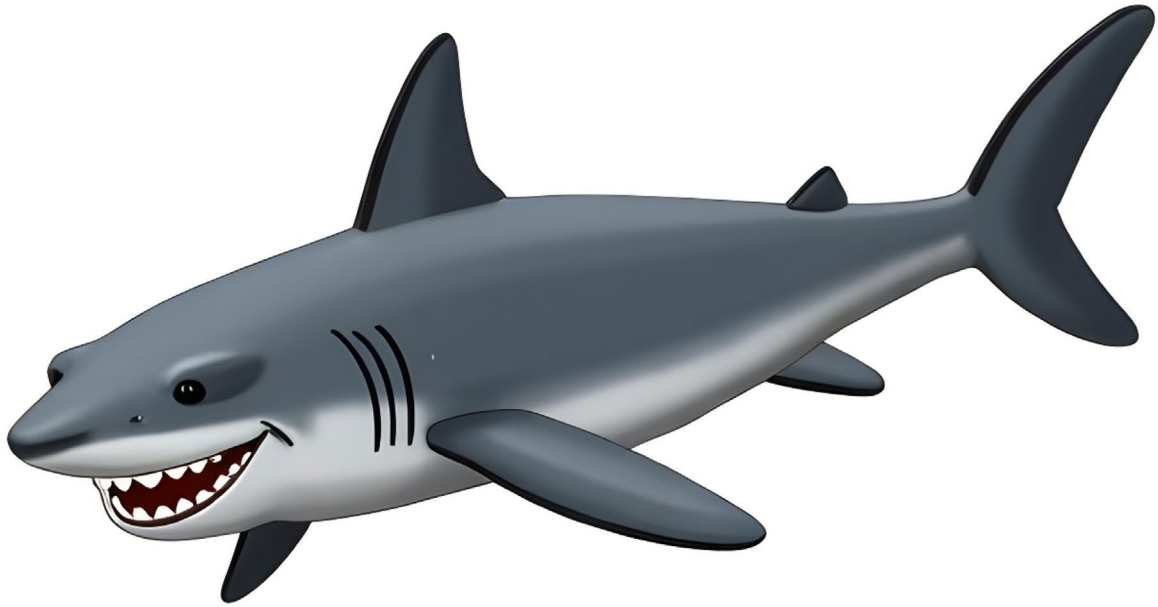
**Inhlanzi yamaqaba**

**Ulwazi olungabalulekile kangako:  
Inhlanzi yamaqaba ihlala  
emanzini afudumele.**



**Isur edifish**

**Ulwazi olungabalulekile kangako:  
Iswedifishi idla ebusuku**



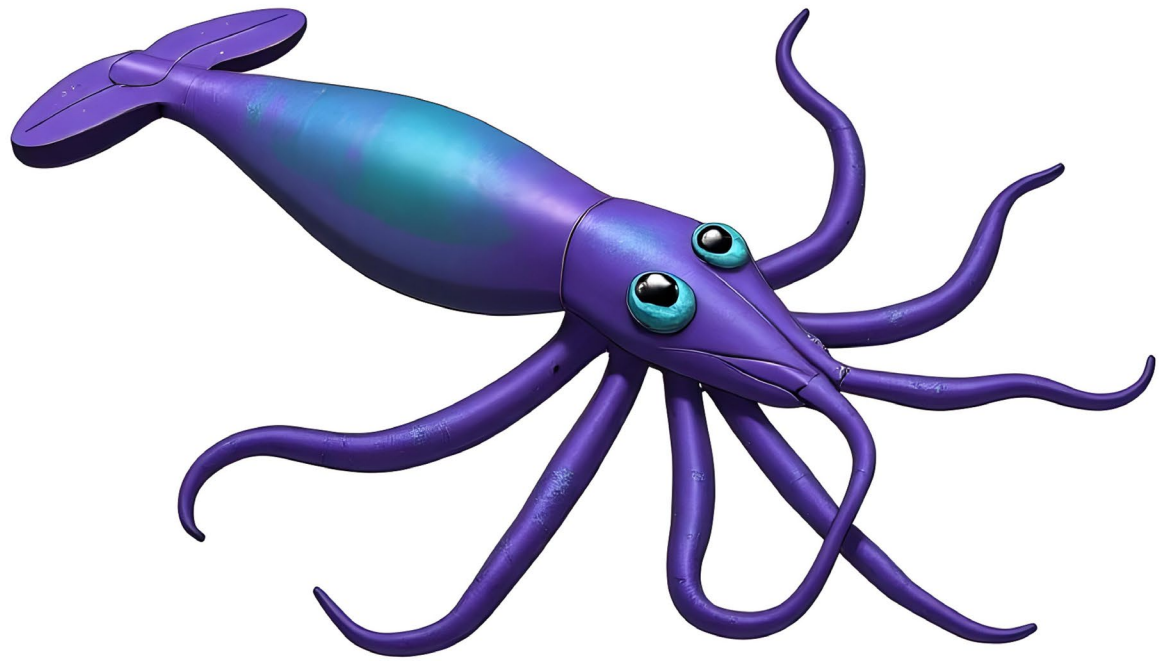
**Ushaka**

**Ulwazi olungabalulekile kangako:  
Oshaka abanamathambo.**



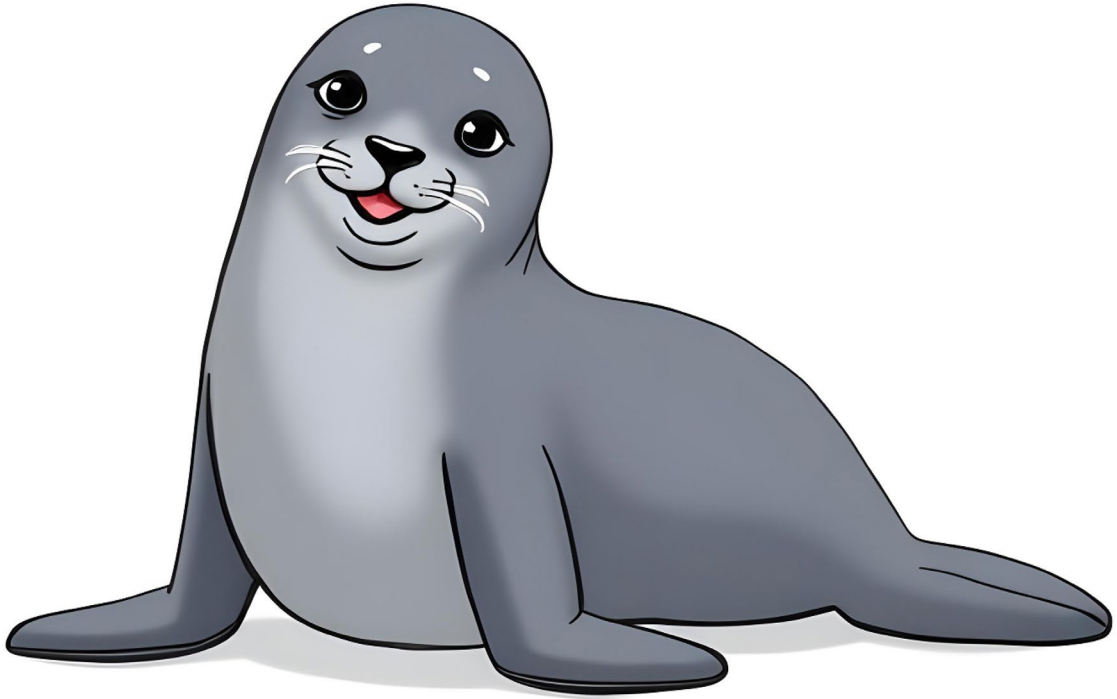
**Iwalirasi**

**Ulwazi olungabalulekile kangako:  
Iwalirasi lisebenzisa amazinyo alo  
amakhulu ukuyaluz a eqhweni.**



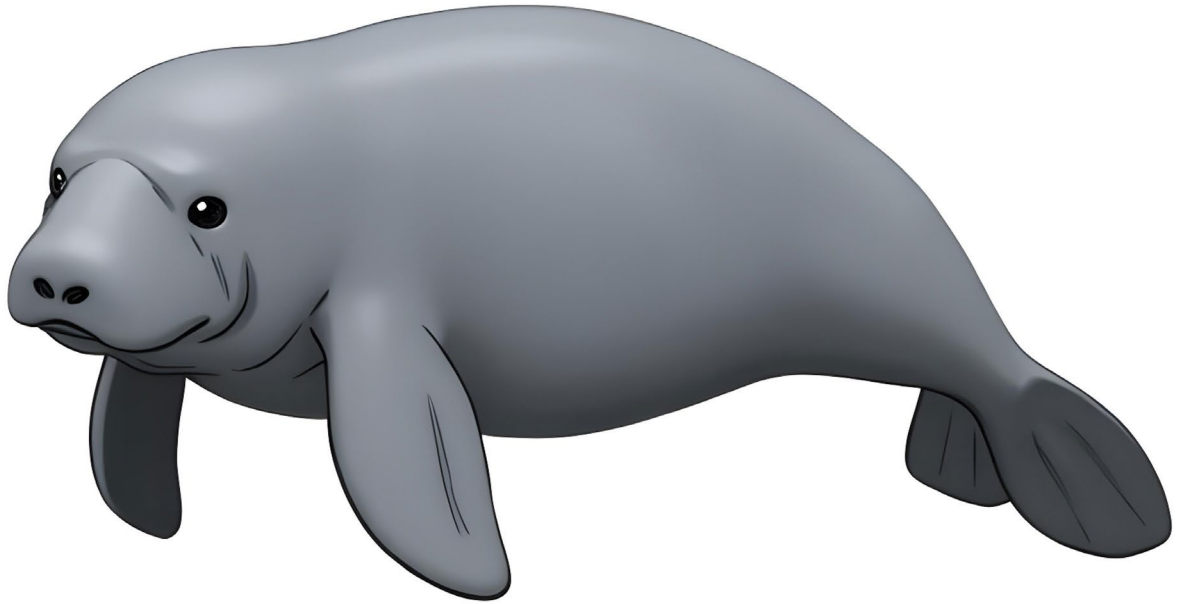
**Ingwane**

**Ulwazi olungabalulekile kangako:  
Ingwanye inegazi eliluhlaza  
okwesibhakabhaka.**



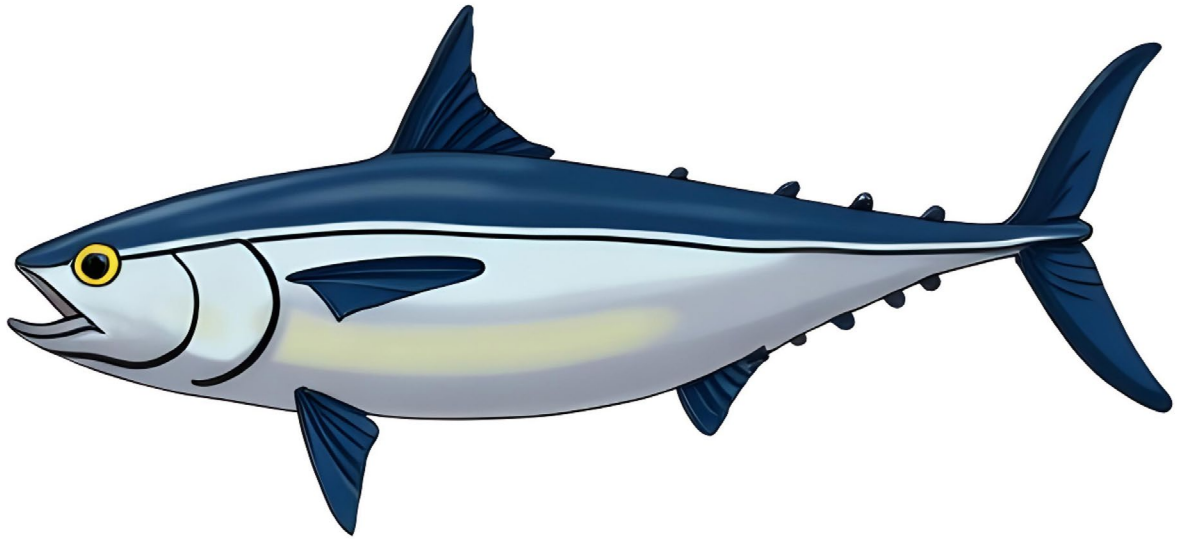
**Isili**

**Ulwazi olungabalulekile kangako:  
Isili linongwengwezi oluluhlonzi  
ukuzigcina lufudumele.**



**Imanathi**

**Ulwazi olungabalulekile kangako:  
Imanathi linomqondo okhaliphile.**



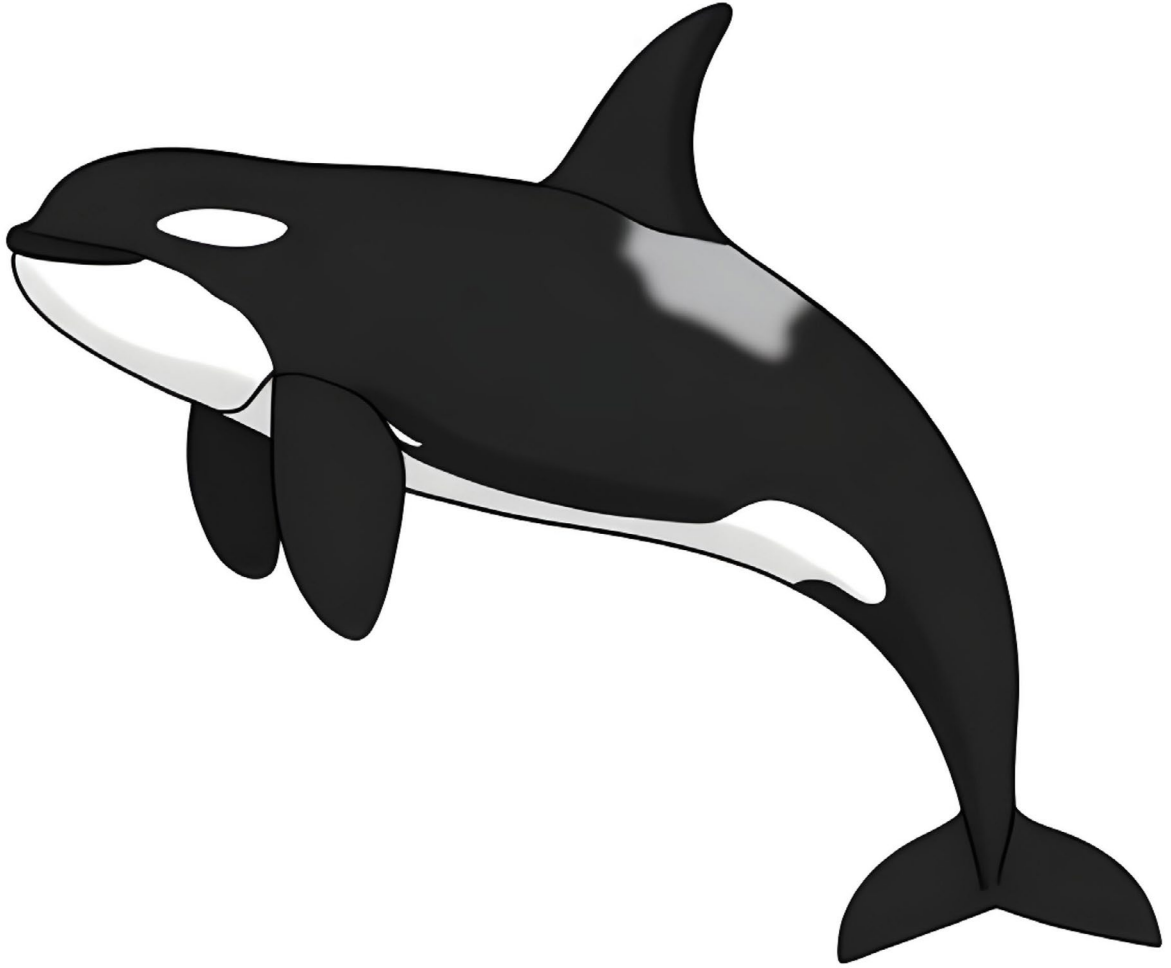
**Ishuna**

**Ulwazi olungabalulekile kangako:  
Amashuna ahlamba ngokushesha.**



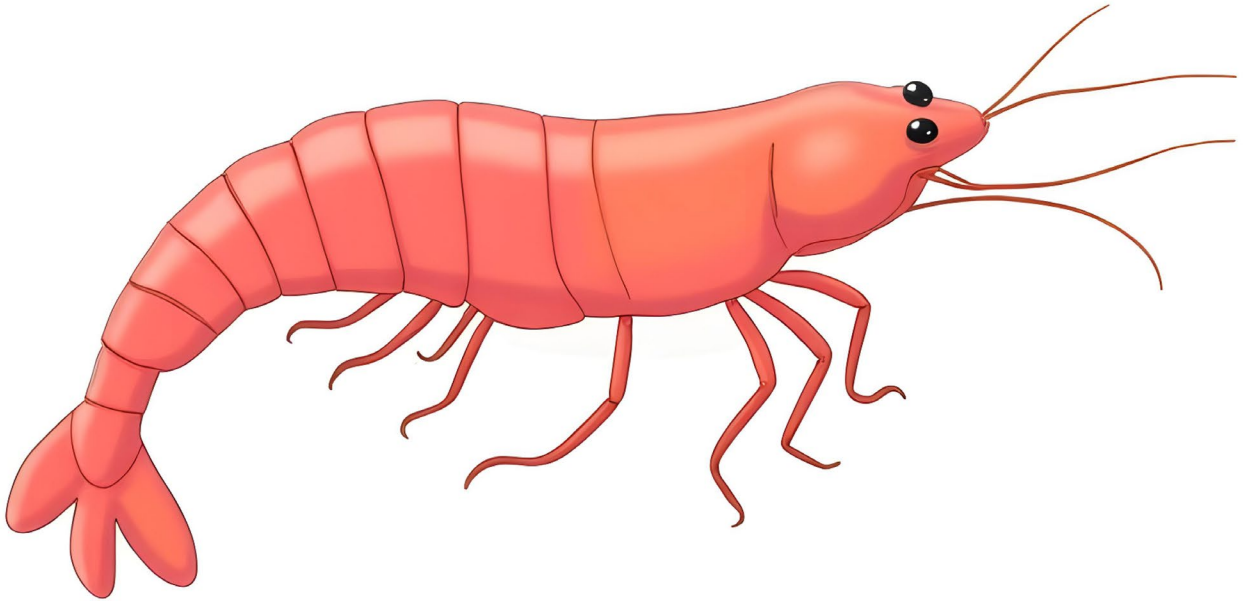
**Ikhw athu**

**Ulwazi olungabalulekile kangako:  
Amakhwathu anezimbobo futhi  
aphefumula ngazo njengenhlanzi.**



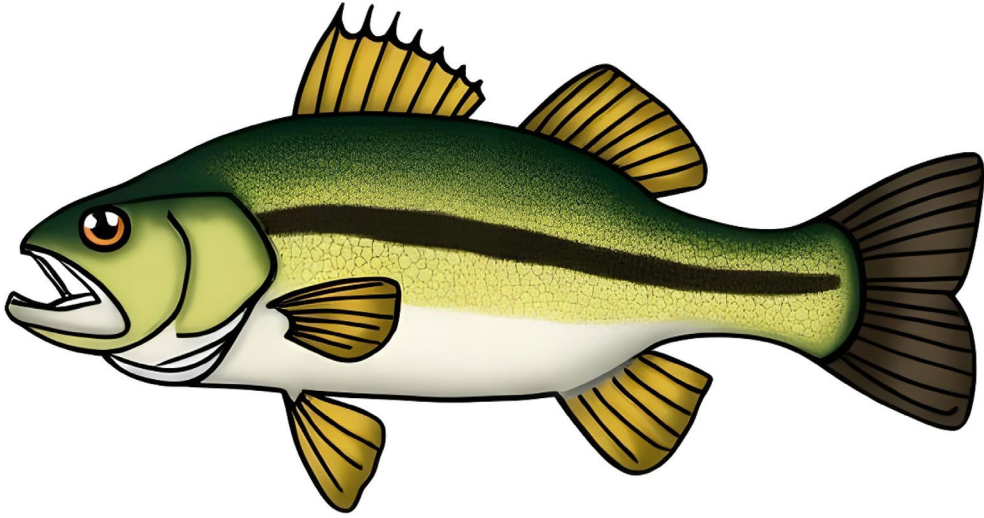
**I- orikha**

**Ulwazi olungabalulekile kangako:  
Ama-orikha ayingx enye yomndeni  
wezinhlengethwa.**



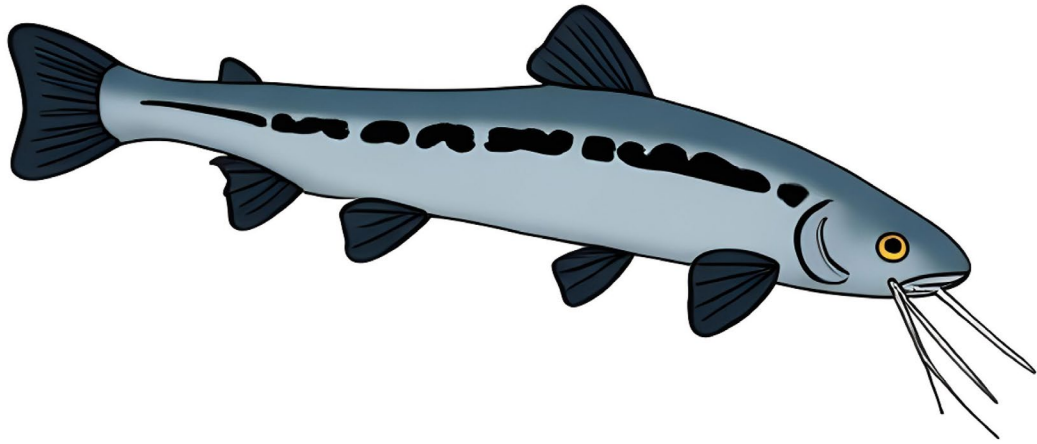
**Uqhashaqhasha**

**Ulwazi olungabalulekile kangako:  
Amehlo emfanzi ahamba  
ezinhlangothini ezahlukene.**



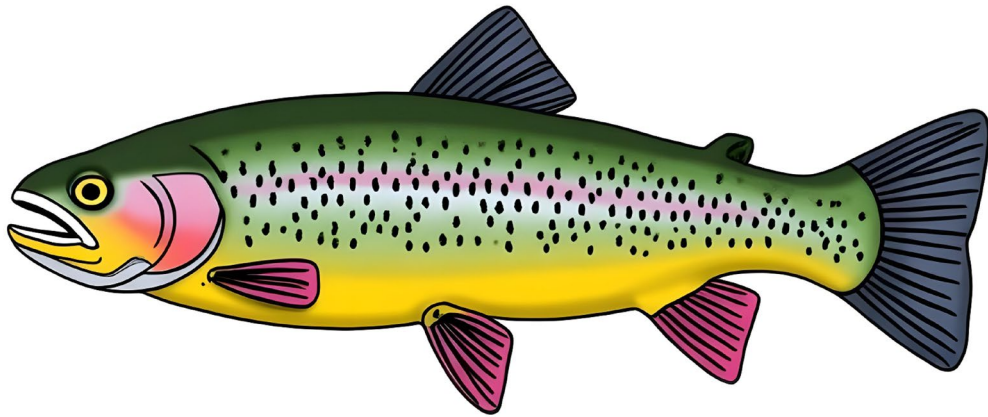
**Ibhasi**

**Ulwazi olungabalulekile kangako:  
Ibhasi linomuzw a omuhle  
wokuhogela.**



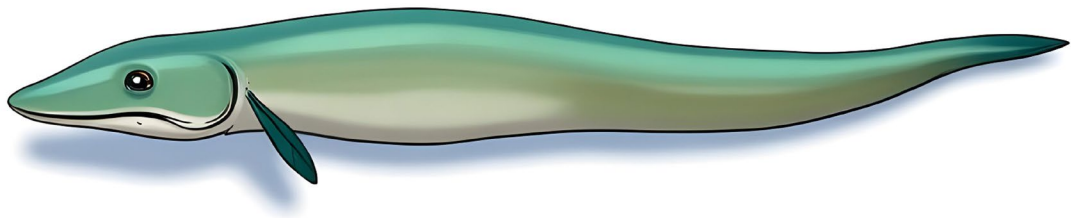
# Ikhethifish

**Ulwazi olungabalulekile kangako:  
Ikhethifishi linezindvu ezilisiza  
ngokunambiatha nokuhogela.**



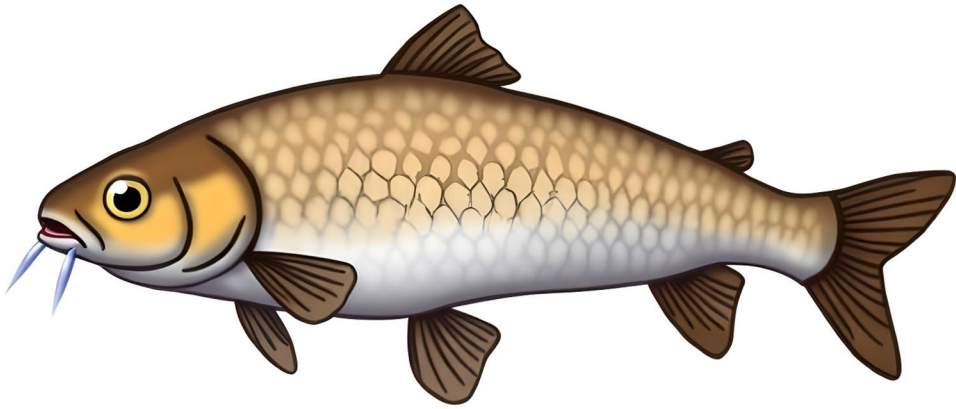
**Ithraawuthi**

**Ulwazi olungabalulekile kangako:  
Ithrawuthi ithanda amanzi  
ahlanzekile abandayo.**



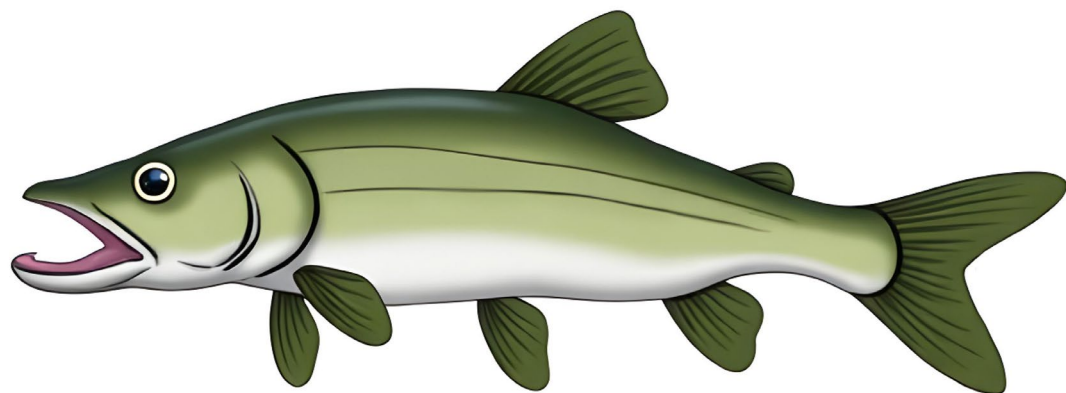
**Umbokwane**

**Ulwazi olungabalulekile kangako:  
Imibokwane ayiboni kahle.**



**Ikhaphu**

**Ulwazi olungabalulekile kangako:  
Amakhaphu anezindevu  
ezinhlangathini zombili zomlomo.**



**Isinuki**

**Ulwazi olungabalulekile kangako:  
Isinuki sinamakhala amade.**